

# SYSTEM PROFILES BASE 45 mm

Expansion of the KANYA modular system and accessories



THE MODULAR SYSTEM FOR CUSTOMISED CONSTRUCTION SOLUTIONS

### System Profiles Base 45



Four sided softline  
extrusion 45x45  
Type E10-1

Page 3



Light extrusion 45x45  
Type E02-1

Page 3



Base extrusion 45x45  
Type E01-1

Page 4



Face extrusion 45x45  
Type E02-6

Page 4



Corner extrusion 45x45  
Type E02-7

Page 5



Double face  
extrusion 45x45  
Type E02-4

Page 5



Softline extrusion 45x45  
Type E03-1

Page 6



Light extrusion 45x90  
Type E02-3

Page 7



Base extrusion 45x90  
Type E01-3

Page 8



Face extrusion 45x90  
Type E01-14

Page 9



Corner extrusion 45x90  
Type E02-2

Page 10



Beam extrusion 45x135  
Type E01-19

Page 11



Beam extrusion 45x180  
Type E01-16

Page 12



Light extrusion 90x90  
Type E02-5

Page 13



Base extrusion 90x90  
Type E01-4

Page 14



Beam extrusion 90x135  
Type E01-13

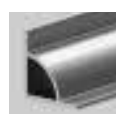
Page 15



Beam extrusion 90x180  
Type E01-5

Page 16

### Special profiles



Angle extrusion

Page 17

### Connection technology



PVS connectors  
Accessories

Page 18-20



PVS-Direct

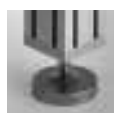
Page 21

### Accessories



Mounting brackets

Page 22-23



Foot plate,  
leg bolt-down socket

Page 24-25



End caps,  
hinges

Page 26-28

### KANYA International



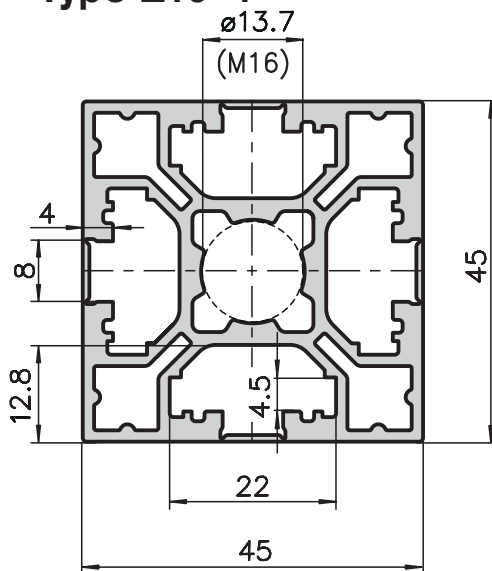
KANYA International  
Sales network

Page 30

### ISO 9001

Our Company has been ISO certified since 1996. ISO 9001 is the basis for continuous improvement of the management system and process management.

## Four sided softline extrusion 45x45 Type E10-1



### Application

The four sided softline extrusion 45x45 features an absolutely smooth surface. For this reason it is ideally suitable for clean room technology. The stable and elegant profile is easily washable. All connections are possible, thanks to the rip off slots.

#### Technical data

$I_x, y$	=	14.07 cm <sup>4</sup>
$W_x, y$	=	6.25 cm <sup>3</sup>
Cross-section area	=	6.75 cm <sup>2</sup>
Weight	=	2.07 kg/m

#### Order data

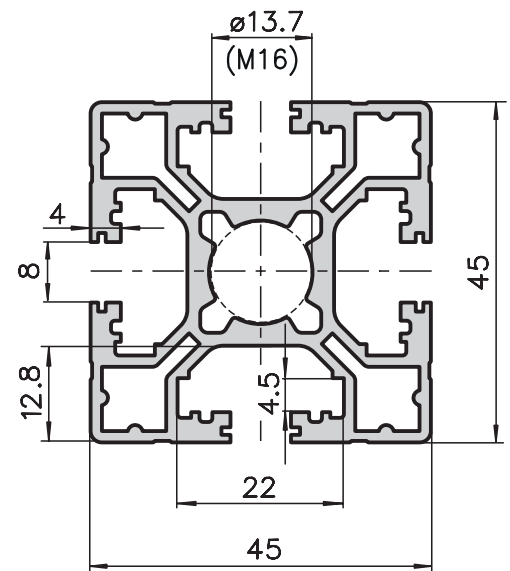
#### Order number

Four sided softline extrusion 45x45	
Standard length 5000 mm	E10-1-00/5000
Four sided softline extrusion	
Cut to length	E10-1-02-02/...

Extra machining see main catalogue  
pages 56-59



## Light extrusion 45x45 Type E02-1



### Application

With this light extrusion 45x45 you have many possible applications. The light-weight design offers a stable construction at an unbeatable price. This profile is particularly suitable for protective enclosures.

#### Technical data

$I_x, y$	=	13.16 cm <sup>4</sup>
$W_x, y$	=	5.85 cm <sup>3</sup>
Cross-section area	=	6.37 cm <sup>2</sup>
Weight	=	1.72 kg/m

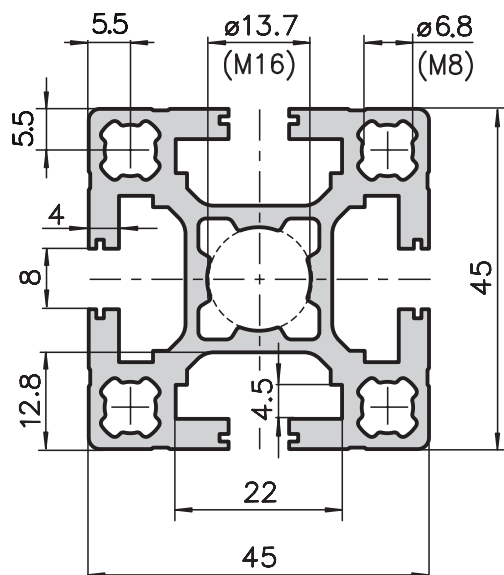
#### Order data

#### Order number

Light extrusion 45x45	
Standard length 5000 mm	E02-1-00/5000
Light extrusion 45x45	
Cut to length	E02-1-02-02/...

Extra machining see main catalogue  
pages 56-59

**Base extrusion 45x45**  
**Type E01-1**



## Application

The extrusions of base 45 are an ideal supplement to those of bases 20, 30, 40 and 50. The base extrusion 45x45 can be used for all types of constructions. It is exceptionally stable. It has an optimal weight and mechanical strength ratio.

## Technical data

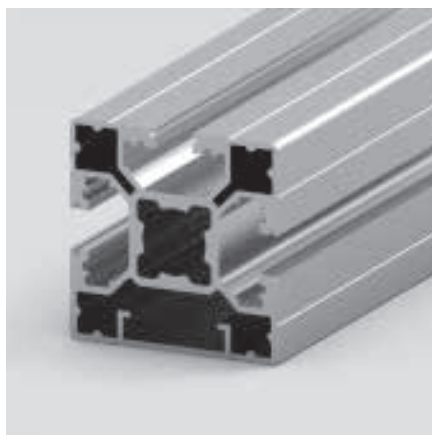
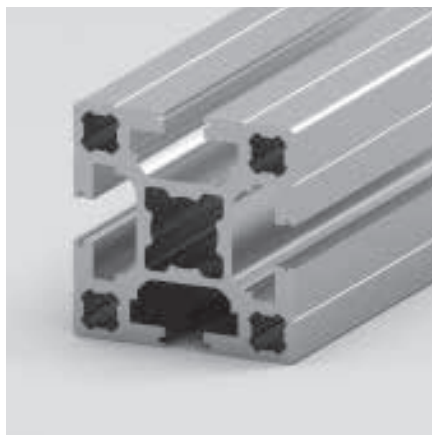
I <sub>x</sub> , y	=	16.12 cm <sup>4</sup>
W <sub>x</sub> , y	=	7.16 cm <sup>3</sup>
Cross-section area	=	7.68 cm <sup>2</sup>
Weight	=	2.07 kg/m

## Order data

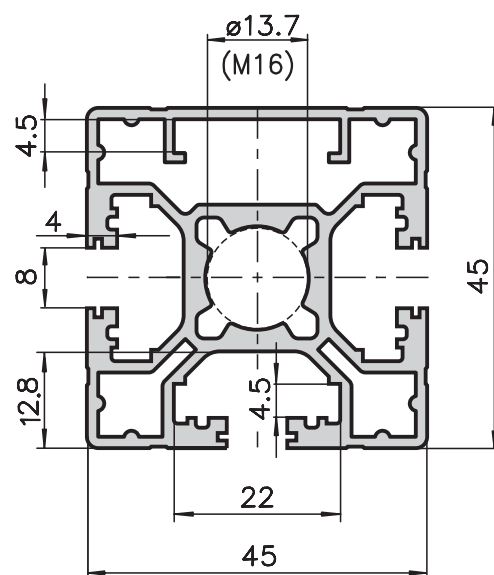
## Order number

Base extrusion 45x45	
Standard length 5000 mm	E01-1-00/5000
Base extrusion 45x45	
Cut to length	E01-1-02-02/...

Extra machining see main catalogue  
pages 56–59



**Face extrusion 45x45**  
**Type E02-6**



## Application

As with the base extrusion, the face extrusion can also be used for a wide range of applications. They are distinguishable by having one closed side. This reduces possible dirt deposits and gives an optically smooth effect. Extrusions can also be fitted onto the closed faces.

## Technical data

I <sub>x</sub>	=	11.76 cm <sup>4</sup>
I <sub>y</sub>	=	12.20 cm <sup>4</sup>
W <sub>x</sub>	=	5.13 cm <sup>3</sup>
W <sub>y</sub>	=	5.42 cm <sup>3</sup>
Cross-section area	=	5.77 cm <sup>2</sup>
Weight	=	1.59 kg/m

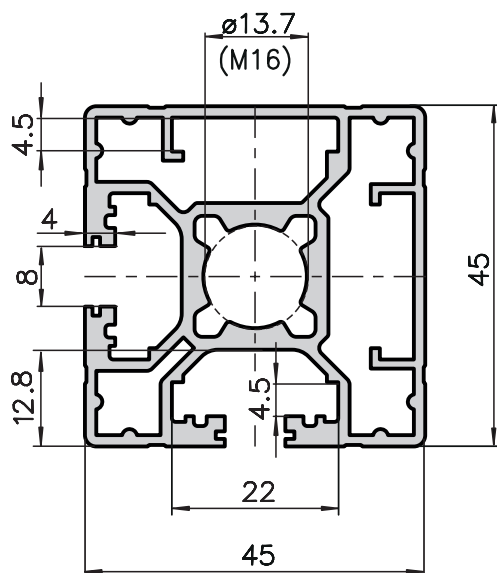
### Order data

## Order number

Face extrusion 45x45	
Standard length 5000 mm	E02-6-00/5000
Face extrusion 45x45	
Cut to length	E02-6-02-02/...

Extra machining see main catalogue  
pages 56–59

## Corner extrusion 45x45 Type E02-7



### Application

Since it is closed on two sides, the corner extrusion has a compact appearance. This simplifies cleaning but it can still be used universally. Extrusions can also be fitted onto the closed faces.

#### Technical data

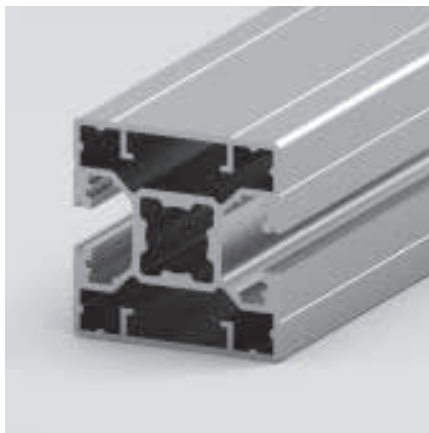
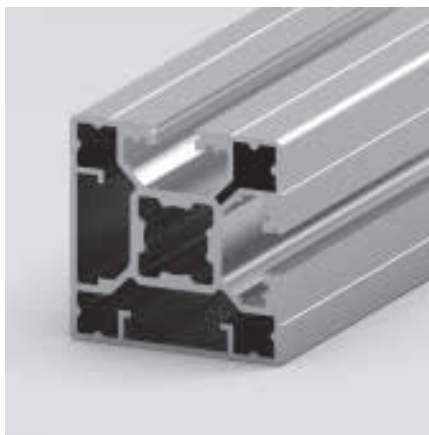
$I_x$	=	11.75 cm <sup>4</sup>
$I_y$	=	11.83 cm <sup>4</sup>
$W_x$	=	5.12 cm <sup>3</sup>
$W_y$	=	5.16 cm <sup>3</sup>
Cross-section area	=	5.63 cm <sup>2</sup>
Weight	=	1.52 kg/m

#### Order data

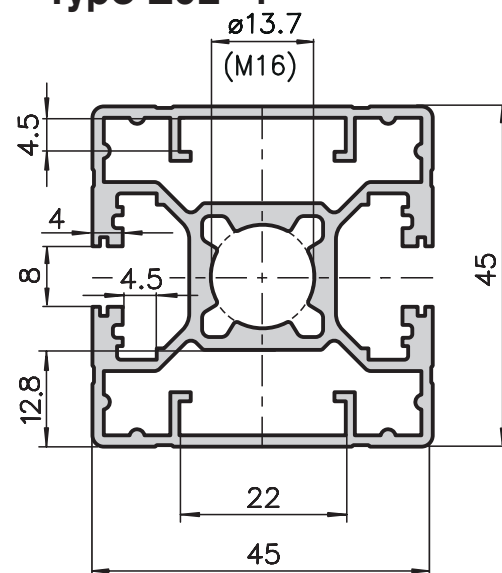
#### Order number

Corner extrusion 45x45	
Standard length 5000 mm	E02-7-00/5000
Corner extrusion 45x45	
Cut to length	E02-7-02-02/...

Extra machining see main catalogue  
pages 56-59



## Double face extrusion 45x45 Type E02-4



### Application

The double face extrusion 45x45 lends itself for all types of cladding. The two closed profile fronts present a timeless design.

#### Technical data

$I_x$	=	11.46 cm <sup>4</sup>
$I_y$	=	12.33 cm <sup>4</sup>
$W_x$	=	5.09 cm <sup>3</sup>
$W_y$	=	5.48 cm <sup>3</sup>
Cross-section area	=	5.58 cm <sup>2</sup>
Weight	=	1.56 kg/m

#### Order data

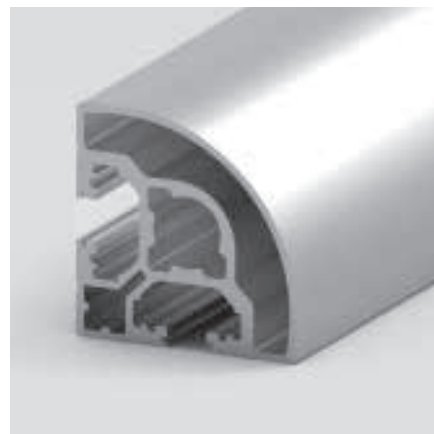
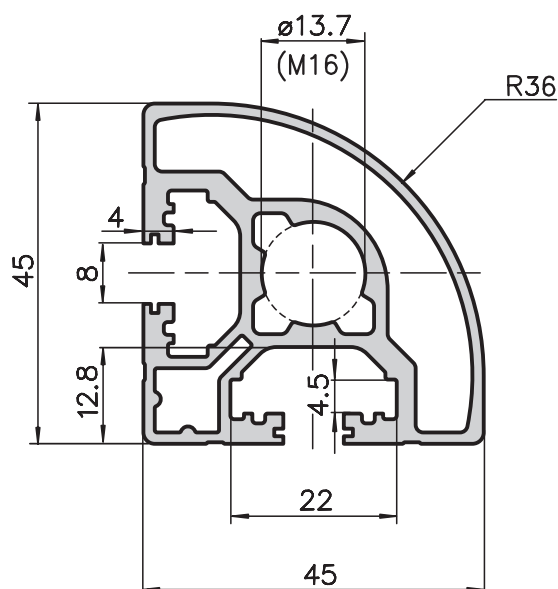
#### Order number

Double face extrusion 45x45	
Standard length 5000 mm	E02-4-00/5000
Double face extrusion 45x45	
Cut to length	E02-4-02-02/...

Extra machining see main catalogue  
pages 56-59

Base 45 mm

## Softline extrusion 45x45 Type E03-1



### Application

The softline extrusion is suited for all applications where sharp corners are not desired. The round form has an elegant, modern and timeless effect. The profile is often used for construction of furniture and picture frames.

#### Technical data

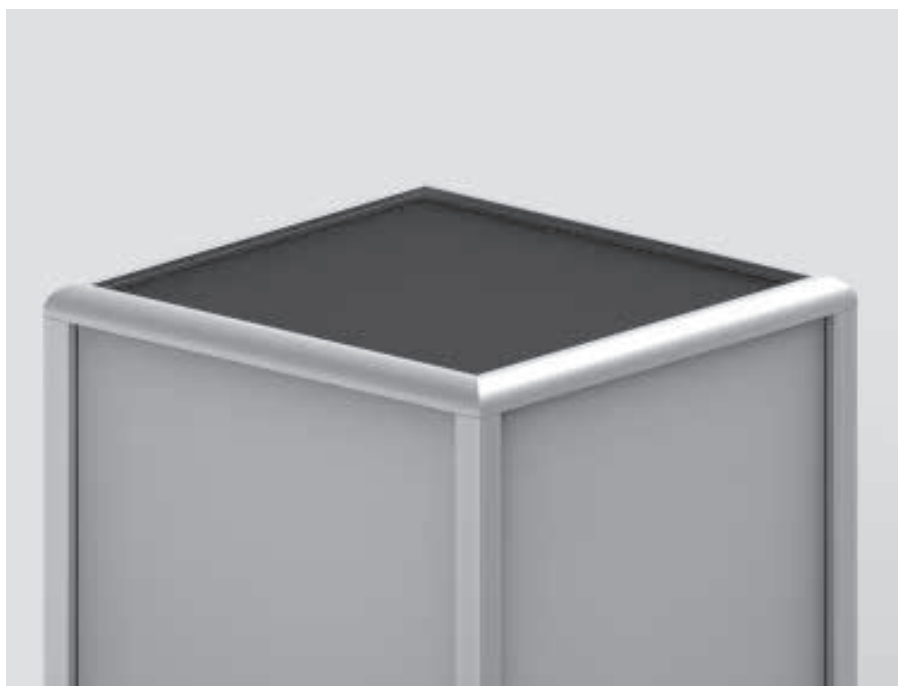
$I_{x, y}$	=	9.70 cm <sup>4</sup>
$W_{x, y}$	=	3.80 cm <sup>3</sup>
Cross-section area	=	5.35 cm <sup>2</sup>
Weight	=	1.45 kg/m

#### Order data

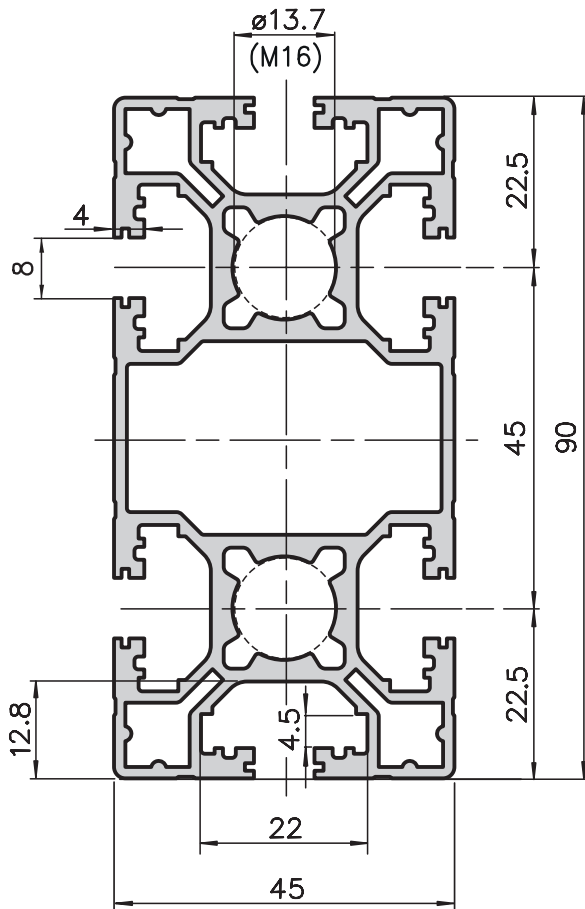
#### Order number

Softline extrusion 45x45	
Standard length 5000 mm	E03-1-00/5000
Softline extrusion 45x45	
Cut to length	E03-1-02-02/...

Extra machining see main catalogue  
pages 56-59

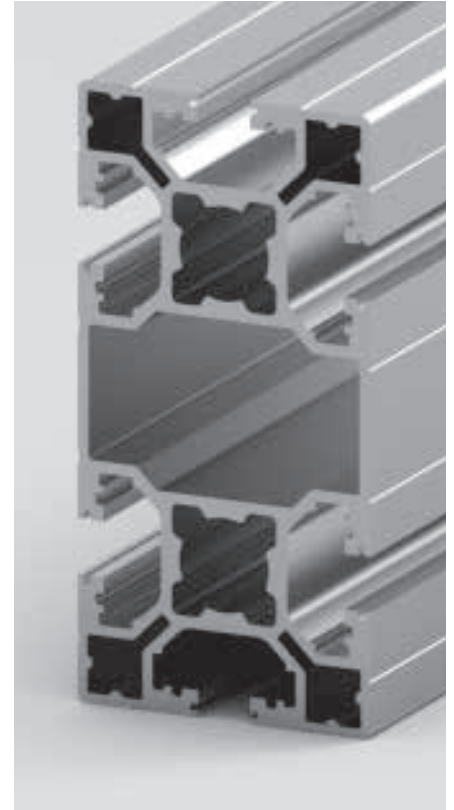


## Light extrusion 45x90 Type E02-3



### Application

This extrusion with 2 center holes increases the connection stability. The light-weight design offers a stable construction at an unbeatable price.



### Technical data

$I_x$	=	90.44 cm <sup>4</sup>
$I_y$	=	23.62 cm <sup>4</sup>
$W_x$	=	20.10 cm <sup>3</sup>
$W_y$	=	10.50 cm <sup>3</sup>
Cross-section area	=	10.54 cm <sup>2</sup>
Weight	=	2.84 kg/m

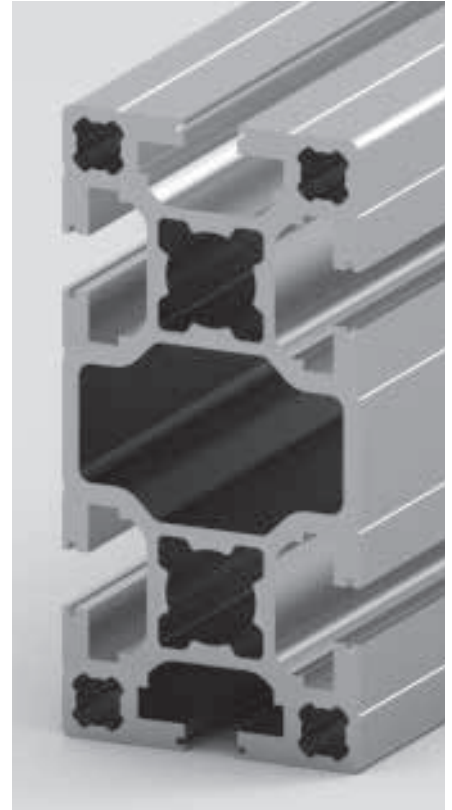
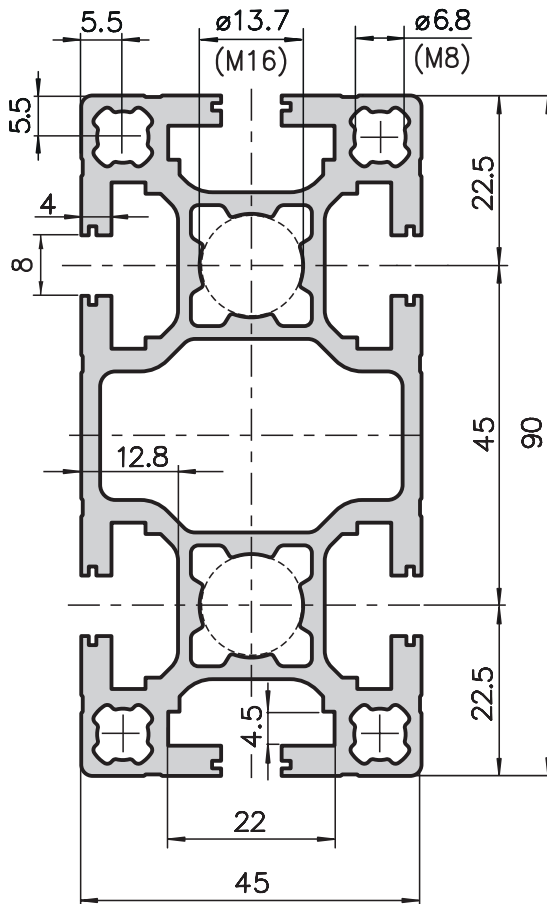
### Order data

### Order number

Light extrusion 45x90	
Standard length 5000 mm	E02-3-00/5000
Light extrusion 45x90	
Cut to length	E02-3-02-02/...

Extra machining see main catalogue  
pages 56-59

**Base extrusion 45x90**  
**Type E01-3**



## Application

This base extrusion can also be used for constructions of all types. It is exceptionally stable and its cross section makes a very wide range of applications possible.

## Technical data

$I_x$	=	109.54 cm <sup>4</sup>
$I_y$	=	29.77 cm <sup>4</sup>
$W_x$	=	24.34 cm <sup>3</sup>
$W_y$	=	13.23 cm <sup>3</sup>
Cross-section area	=	12.97 cm <sup>2</sup>
Weight	=	3.50 kg/m

## Order data

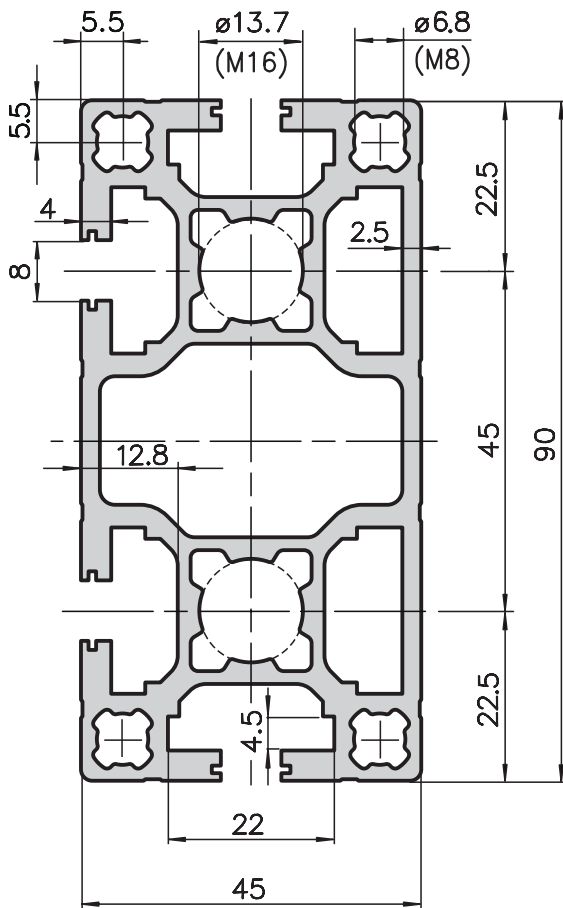
## Order number

Base extrusion 45x90	
Standard length 5000 mm	E01-3-00/5000
Base extrusion 45x90	
Cut to length	E01-3-02-02/...

Extra machining see main catalogue  
pages 56–59

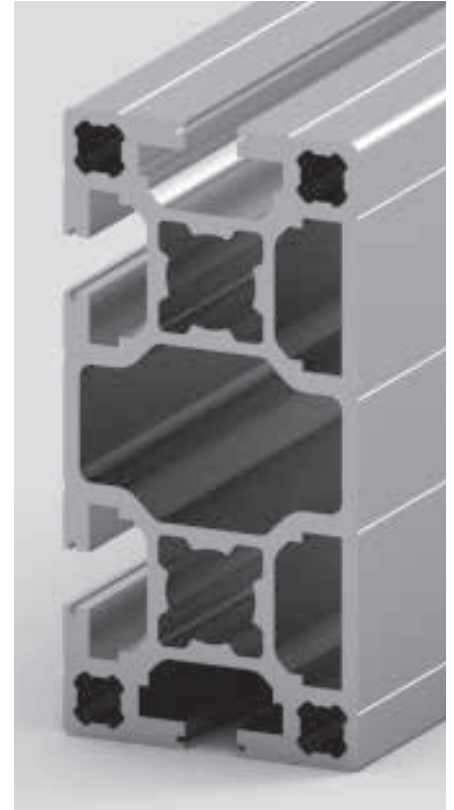


## Face extrusion 45x90 Type E01-14



### Application

The closed sides reduce possible dirt deposits and give an optically smooth effect. As with all face extrusion, this can also be used for a wide range of applications. Extrusions can also be fitted onto the closed faces.



### Technical data

$I_x$	=	109.45 cm <sup>4</sup>
$I_y$	=	30.23 cm <sup>4</sup>
$W_x$	=	24.32 cm <sup>3</sup>
$W_y$	=	13.38 cm <sup>3</sup>
Cross-section area	=	12.99 cm <sup>2</sup>
Weight	=	3.50 kg/m

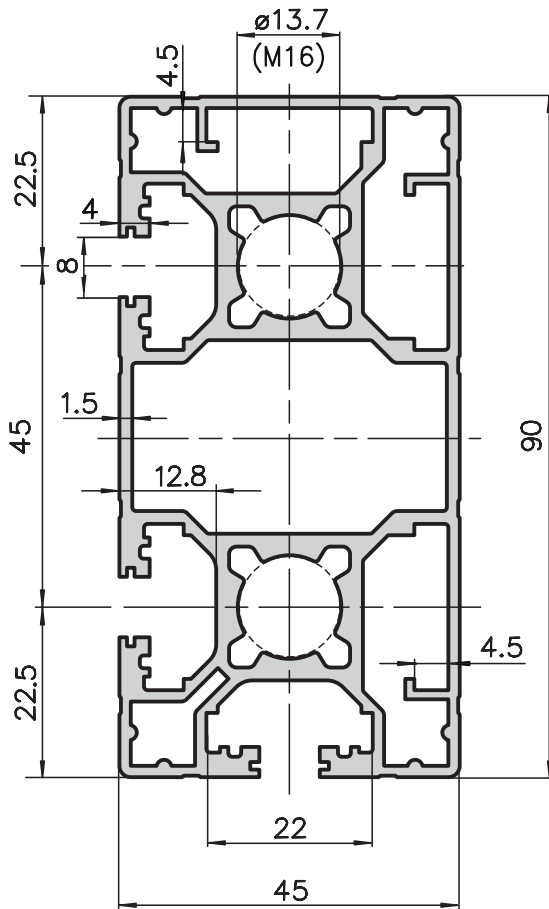
### Order data

### Order number

Face extrusion 45x90	
Standard length 5000 mm	E01-14-00/5000
Face extrusion 45x90	
Cut to length	E01-14-02-02/...

Extra machining see main catalogue  
pages 56-59

## Corner extrusion 45x90 Type E02-2



## Application

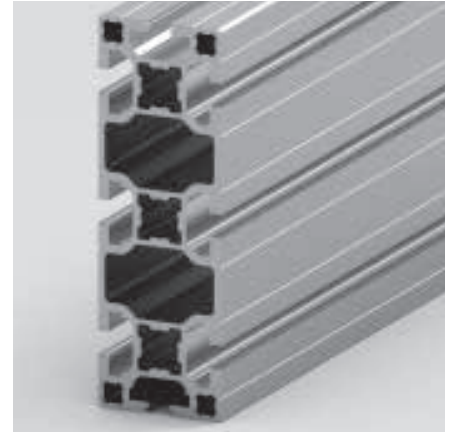
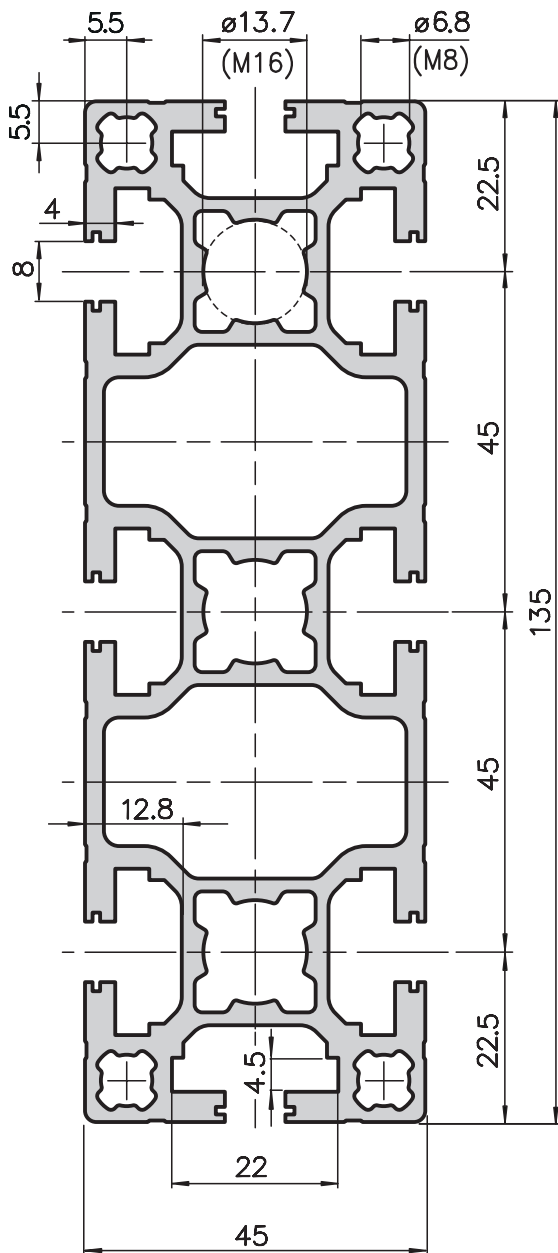
The corner extrusion is suitable for formwork of all types. The closed sides simplify cleaning. Extrusions can also be fitted onto the closed faces.

Technical data		
I <sub>x</sub>	=	82.76 cm <sup>4</sup>
I <sub>y</sub>	=	22.31 cm <sup>4</sup>
W <sub>x</sub>	=	18.26 cm <sup>3</sup>
W <sub>y</sub>	=	9.79 cm <sup>3</sup>
Cross-section area	=	9.80 cm <sup>2</sup>
Weight	=	2.65 kg/m

Order data	Order number
Corner extrusion 45x90	
Standard length 5000 mm	E02-2-00/5000
Corner extrusion 45x90	
Cut to length	E02-2-02-02/...

Extra machining see main catalogue  
pages 56–59

## Beam extrusion 45x135 Type E01-19



### Application

This beam extrusion is mainly used for high loads, thanks to its excellent mechanical strength properties.

#### Technical data

$I_x$	=	334.22 cm <sup>4</sup>
$I_y$	=	43.41 cm <sup>4</sup>
$W_x$	=	49.51 cm <sup>3</sup>
$W_y$	=	19.30 cm <sup>3</sup>
Cross-section area	=	18.25 cm <sup>2</sup>
Weight	=	4.93 kg/m

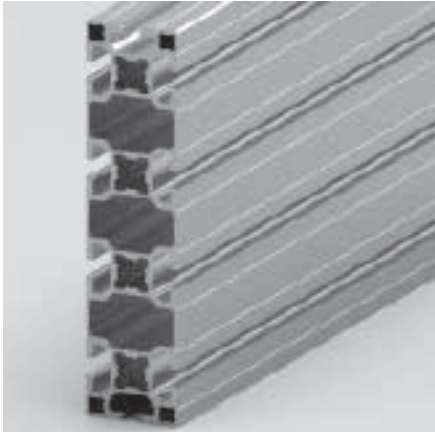
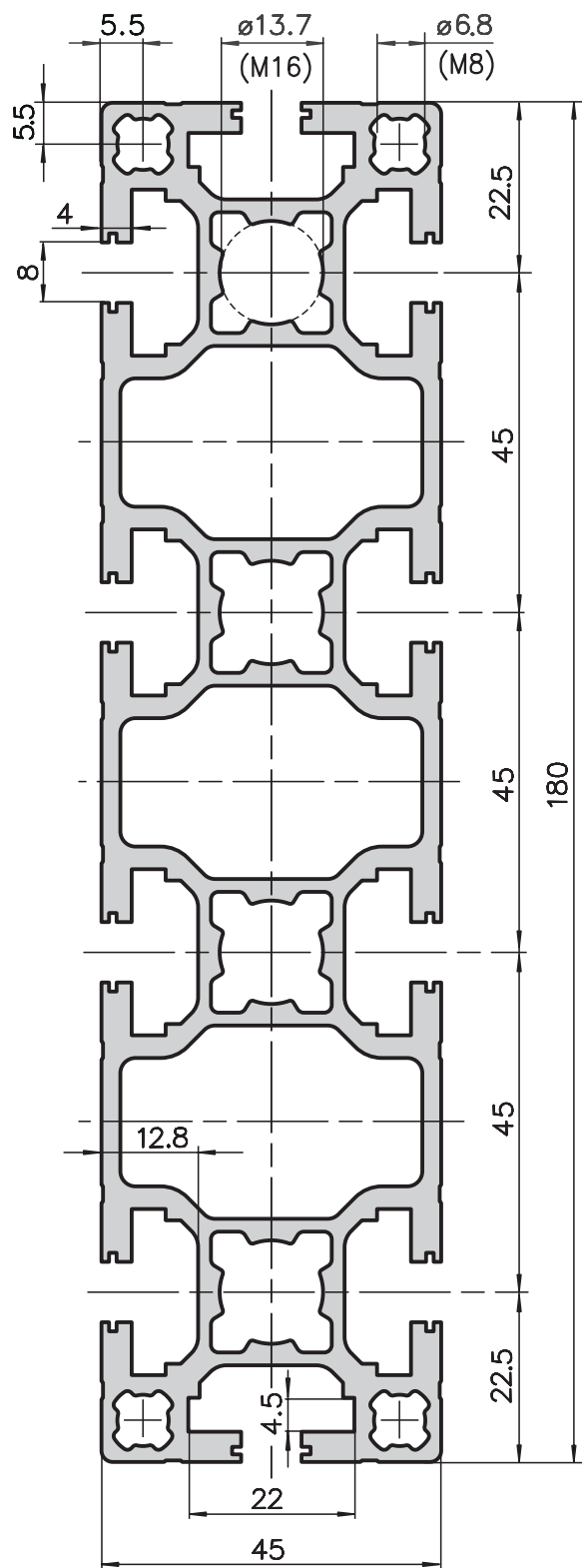
#### Order data

#### Order number

Beam extrusion 45x135	
Standard length 6000 mm	E01-19-01/6000
Beam extrusion 45x135	
Cut to length	E01-19-02-02/...

Extra machining see main catalogue  
pages 56-59

Beam extrusion 45x180  
Type E01-16



Application

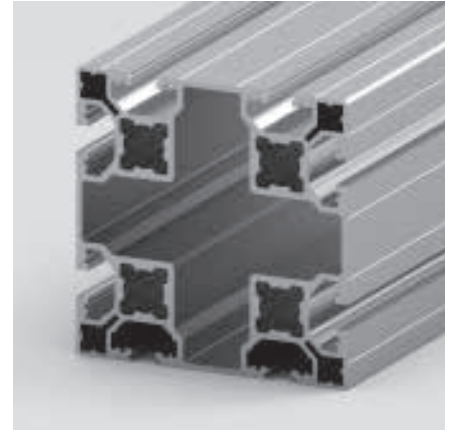
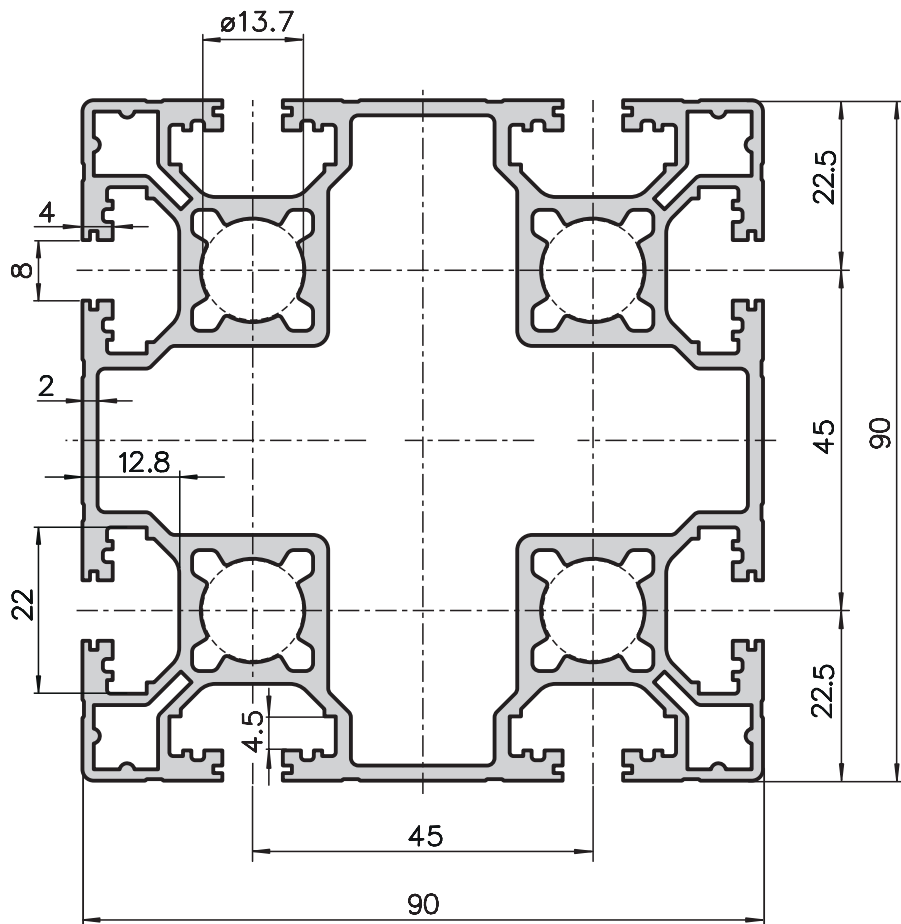
A extrusion for applications with very high load and span widths. Robust large structures can be built. It is also the perfect solution for large portals and stable cross beams.

Technical data	
Ix	= 743.74 cm <sup>4</sup>
Iy	= 57.06 cm <sup>4</sup>
Wx	= 82.64 cm <sup>3</sup>
Wy	= 25.36 cm <sup>3</sup>
Cross-section area	= 23.54 cm <sup>2</sup>
Weight	= 6.36 kg/m

Order data	Order number
Beam extrusion 45x180	
Standard length 6000 mm	E01-16-01/6000
Beam extrusion 45x180	
Cut to length	E01-16-02-02/...

Extra machining see main catalogue  
pages 56-59

## Light extrusion 90x90 Type E02-5



### Application

The light extrusion 90x90 main feature is its optimal torsional stiffness. The lightweight design offers a stable construction at an unbeatable price.

#### Technical data

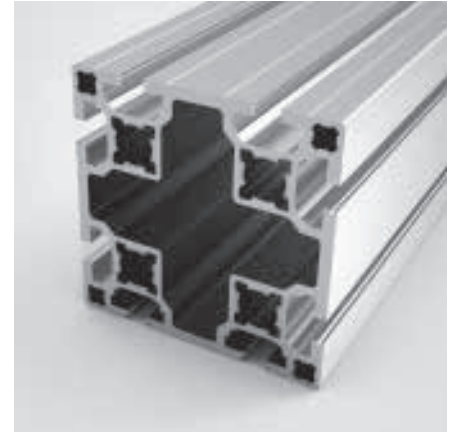
$I_{x, y}$	=	160.09 cm <sup>4</sup>
$W_{x, y}$	=	35.58 cm <sup>3</sup>
Cross-section area	=	17.53 cm <sup>2</sup>
Weight	=	4.73 kg/m

#### Order data

#### Order number

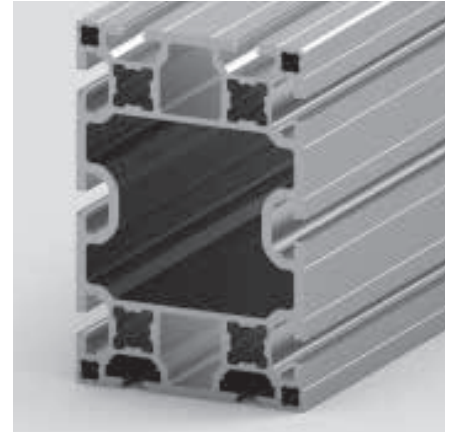
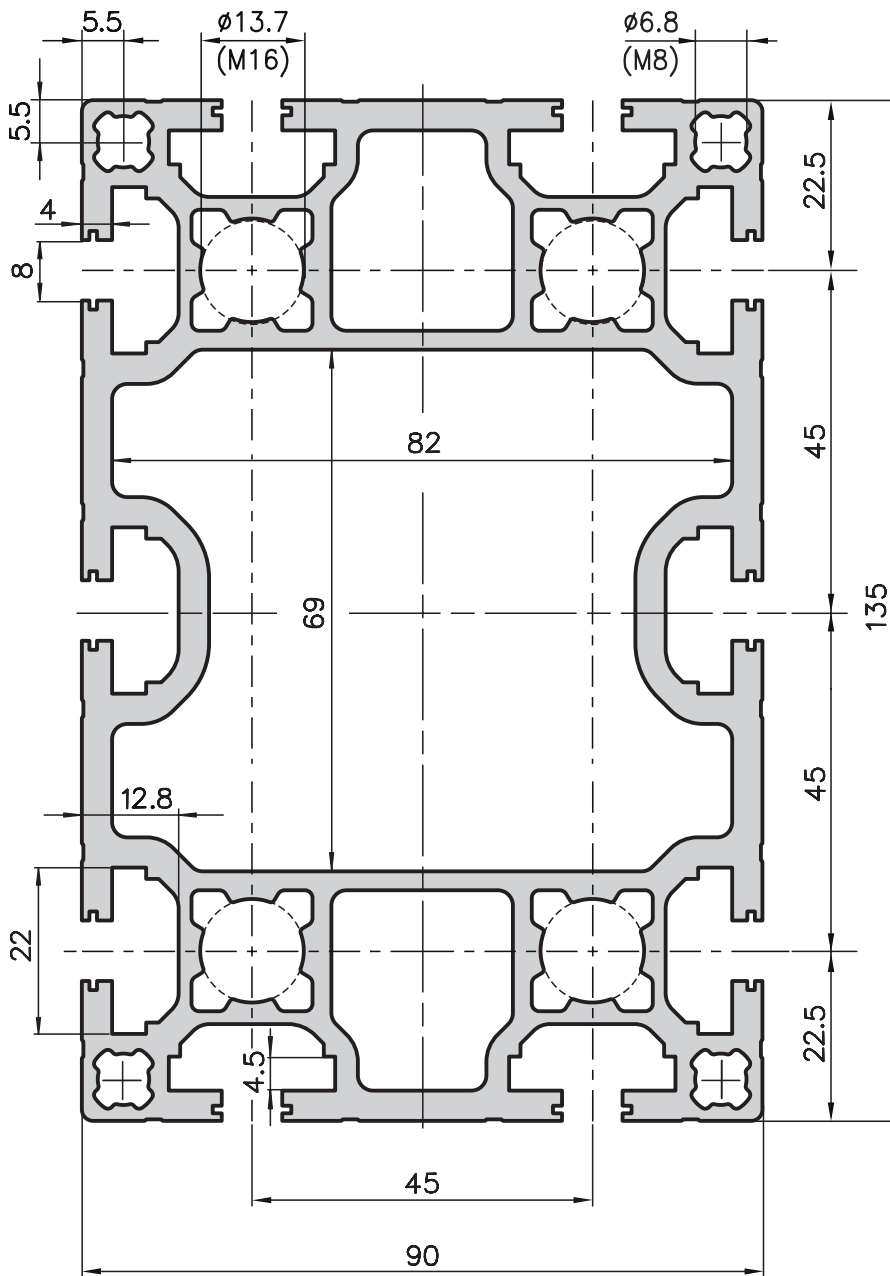
Light extrusion 90x90	
Standard length 6000 mm	E02-5-01/6000
Light extrusion 90x90	
Cut to length	E02-5-02-02/...

Extra machining see main catalogue  
pages 56-59



KANYA

# Beam extrusion 90x135 Type E01-13



## Application

This extrusion can be used for a wide range of applications. Its optimal structural stress values make it perfect for general constructions with high loads.

## Technical data

$I_x$	=	618.00 cm <sup>4</sup>
$I_y$	=	300.57 cm <sup>4</sup>
$W_x$	=	98.56 cm <sup>3</sup>
$W_y$	=	66.79 cm <sup>3</sup>
Cross-section area	=	30.06 cm <sup>2</sup>
Weight	=	8.10 kg/m

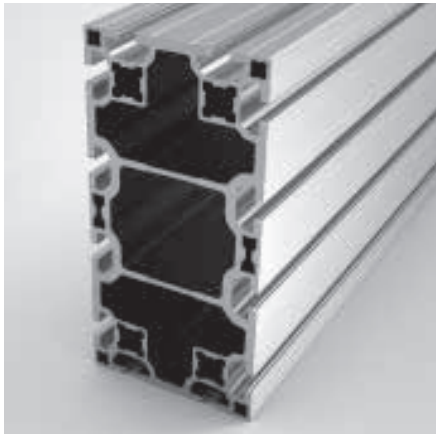
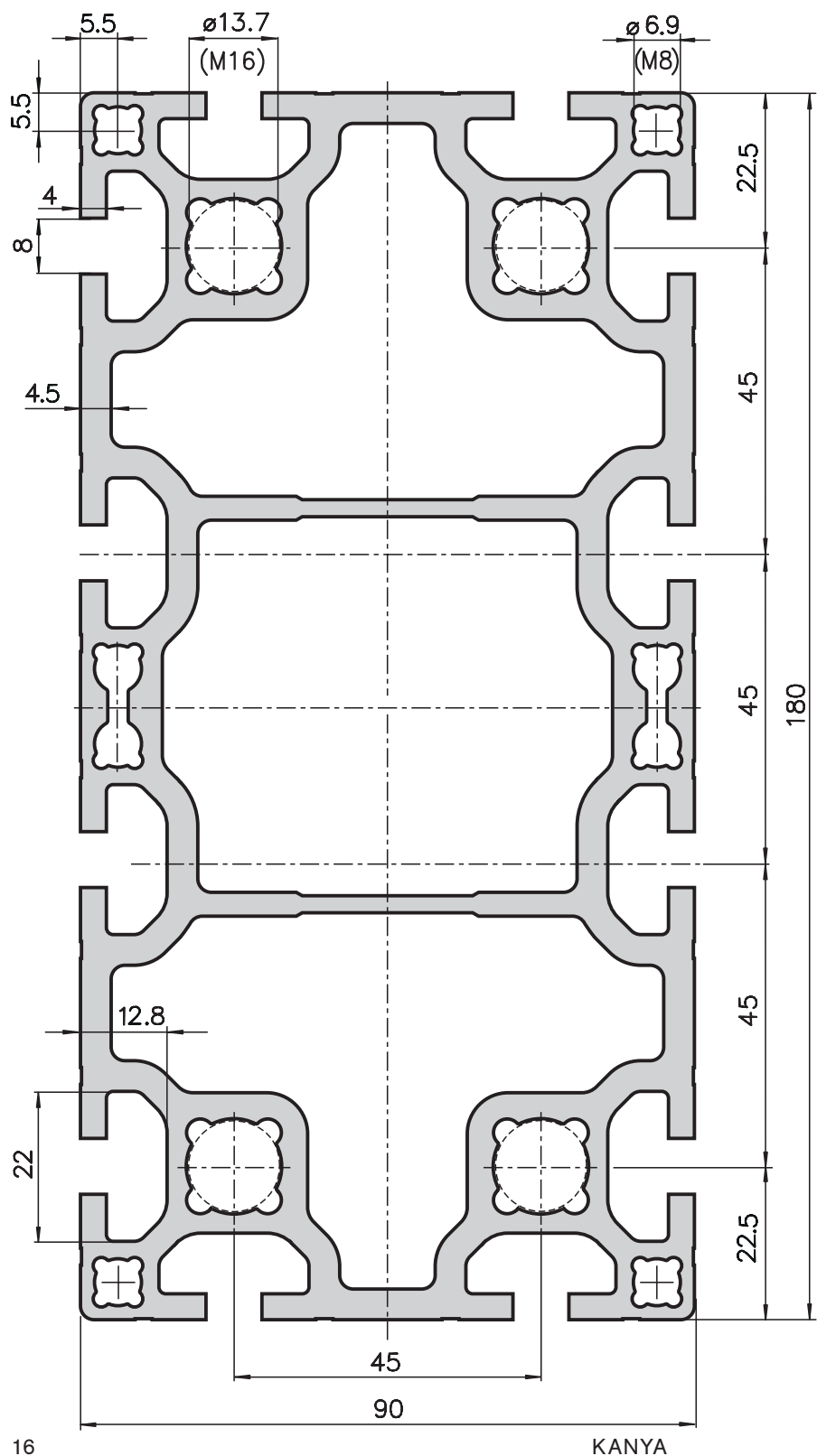
### Order data

## Order number

Beam extrusion 90x135	
Standard length 6000 mm	E01-13-01/6000
Beam extrusion 90x135	
Cut to length	E01-13-02-02/...

Extra machining see main catalogue  
pages 56–59

Beam extrusion 90x180  
Type E01-5



Application

A heavy duty extrusion for portal construction and structures with large self supporting lengths. Ideally suited for all large structures.

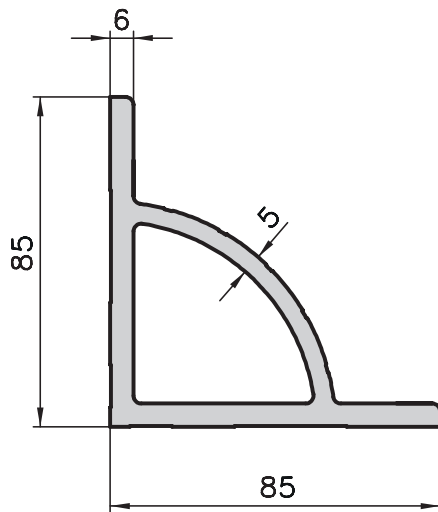
Technical data	
$I_x$	= 1303.61 cm <sup>4</sup>
$I_y$	= 417.14 cm <sup>4</sup>
$W_x$	= 144.85 cm <sup>3</sup>
$W_y$	= 92.69 cm <sup>3</sup>
Cross-section area	= 39.58 cm <sup>2</sup>
Weight	= 10.88 kg/m

Order data	Order number
Beam extrusion 90x180	
Standard length 6000 mm	E01-5-01/6000
Beam extrusion 90x180	
Cut to length	E01-5-02-02/...

Extra machining see main catalogue  
pages 56-59

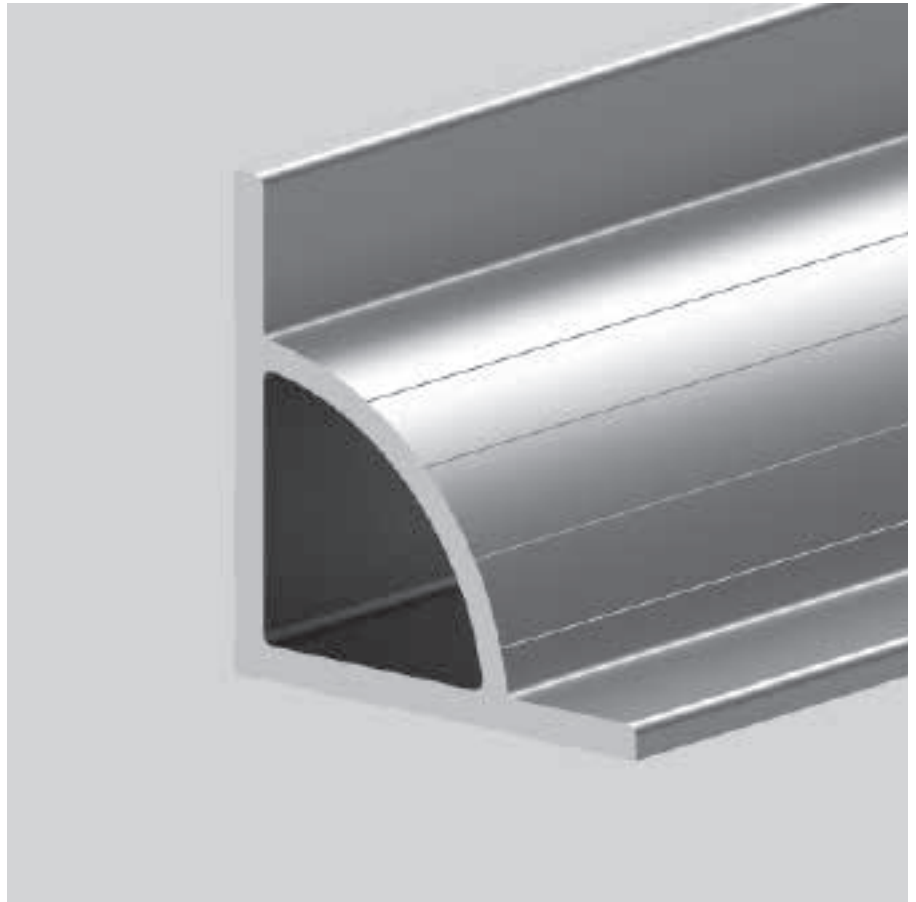


## Angle extrusion Type E30-3



### Application

This angle extrusion is the starting material for mounting brackets for the base 45 products. The support arch with the Kanya shadow slots appears very elegant.



### Technical data

Cross-section area	=	13.44 cm <sup>2</sup>
Weight	=	3.70 kg/m

### Order data      Order number

Angle extrusion raw 85x85	
Standard length 3000 mm	E30-3-00/3000
Angle extrusion raw 85x85	
Cut to length	E30-3-02-02/...

# Universal-, standard- and special connectors

## 1. Universal connectors

Order number					Extrusions with a base of	Order number				
20	30	40	45	50		50	45	40	30	20
				A20-90 (-I/-P)*	50	A20-90 (-I/-P)*				
				E20-90 (-I/-P)* E20-90 (-I/-P)*	45	E20-90 (-I/-P)* E20-90 (-I/-P)*				
				C20-90 (-I/-P)* C20-90 (-I/-P)* C20-90 (-I/-P)*	40	C20-90 (-I/-P)* C20-90 (-I/-P)* C20-90 (-I/-P)*				
	B20-90	B210-90 (-I/-P)* B210-90 (-I/-P)*		B210-90 (-I/-P)* B210-90 (-I/-P)*	30	B210-90 (-I/-P)* B210-90 (-I/-P)* B210-90 (-I/-P)* B210-90				
D20-90	D20-90	D210-90 (-I/-P)* D210-90 (-I/-P)*		D210-90 (-I/-P)* D210-90 (-I/-P)*	Core hole 20 12.1 mm	D210-90 (-I/-P)* D210-90 (-I/-P)* D210-90 (-I/-P)* D20-90				D20-90
DD20-90	DD20-90	DD210-90 DD210-90		DD210-90	Core hole 20 6.0 mm	DD210-90 DD210-90 DD210-90 DD20-90				DD20-90
				A20-95	A02-8	A20-95				
				C20-95	C02-8 / C03-8	C20-95		C20-95		
	B20-95	B210-95		B210-95	B01-8	B210-95		B210-95	B20-95	

\*....P = universal connectors with electrical bonding      \*....I = universal connectors stainless steel 1.4305

## 2. Standard connectors

Order number					Extrusions with a base of	Order number				
20	30	40	45	50		50	45	40	30	20
				A20-10(-I/-P)*	50	A20-20(-I/-P)*				
				E20-10(-I/-P)*	45	E20-20(-I/-P)*				
				C20-10(-I/-P)*	40	C20-20(-I/-P)*				
				B20-10(-I/-P)*	30	B20-20(-I/-P)*				
D20-10(-I/-P)*					Core hole 20 12.1 mm					D20-20(-I/-P)*
DD20-10					Core hole 20 6.0 mm					DD20-20
				A20-50	A02-8	A20-51				
				C20-50	C02-8 / C03-8			C20-51		
				B20-50	B01-8			B20-51		

\*....P = universal connectors with electrical bonding      \*....I = universal connectors stainless steel 1.4305

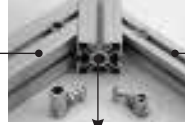
## 3. Combination connectors

Order number					Extrusions with a base of	Order number				
20	30	40	45	50		50	45	40	30	20
AB20-10	AB20-10	A20-10	A20-10		50		A20-20	A20-20	AB20-20	AB20-20
EB20-10	EB20-10	E20-10		E20-10	45	E20-20		E20-20	EB20-20	EB20-20
CB20-10	CB20-10		C20-10	C20-10	40	C20-20	C20-20		CB20-20	CB20-20
B20-10		B210-10	B210-10	B210-10	30	B210-20	B210-20	B210-20		B20-20
	D20-10	D210-10	D210-10	D210-10	Core hole 20 12.1 mm	D210-20	D210-20	D210-20	D20-20	
	DD20-10	DD210-10	DD210-10	DD210-10	Core hole 20 6.0 mm	DD210-20	DD210-20	DD210-20	DD20-20	
		B210-50	B210-50	B210-50	C02-8 / C03-8	C20-51	C20-51			
					B01-8	B210-51	B210-51	B210-51		

## 4. Special connectors

Order number					Extrusions with a base of	Order number				
20	30	40	45	50		50	45	40	30	20
AB20-10	AB20-10	A20-10	A20-10	A20-10	50	A20-20	A20-10	A20-20	AB20-20	AB20-20
EB20-15	EB20-15	E20-15	E20-15	E20-15	45	E20-25	E20-25	E20-25	EB20-25	EB20-25
CB20-15	CB20-15	C20-15	C20-15	C20-15	40	C20-25	C20-25	C20-25	CB20-25	CB20-25
B20-15	B20-15	B210-15	B210-15	B210-15	30	B210-25	B210-25	B210-25	B20-25	B20-25
		A20-50	A20-50	A20-50	A02-8	A20-51	A20-51	A20-51		

5a. Mitre connectors with formed anchor



Order number

20*	20	30	40	45	50
DD221-α	D221-α	B221-α	C22-α	E22-α	A22-α
DD221-α	D221-α	B221-α	C22-α	E22-α	
DD221-α	D221-α	B221-α	C22-α		
DD22-α	D22-α	B22-α			
DD22-α	D22-α				

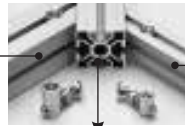
Code α 15° = -15, α 30° = -30, α 45° = -45

\*Core hole 6.0 mm

Extrusions with a base of
50
45
40
30
20

50	45	40	30	20	20*
A23-α	E23-α	C23-α	B231-α	D231-α	DD231-α
	E23-α	C23-α	B231-α	D231-α	DD231-α
		C23-α	B231-α	D231-α	DD231-α
			B23-α	D23-α	DD23-α
				D23-α	DD23-α

Order number



5b. Mitre connectors with an articulated anchor  
(up to max. 55°)

Order number

20	30	40	45	50
D221-00	B221-00	C22-00	E22-00	A22-00
D221-00	B221-00	C22-00	E22-00	
D221-00	B221-00	C22-00		
D22-00	B22-00			
D22-00				

Extrusions with a base of
50
45
40
30
20

50	45	40	30	20
A22-00	E22-00	C22-00	B221-00	D221-00
	E22-00	C22-00	B221-00	D221-00
		C22-00	B221-00	D221-00
			B22-00	D22-00
				D22-00

Order number



5c. Mitred connectors with an formed anchor 90°

Order number

30	40	45	50
B221-α	C22-α	E22-α	A22-α
B221-α	C22-α	E22-α	
B221-α	C22-α		
B22-α			

Code α 15° = -19, α 30° = -39, α 45° = -49

Extrusions with a base of
50
45
40
30

50	45	40	30
A23-α	E23-α	C23-α	B231-α
	E23-α	C23-α	B231-α
		C23-α	B231-α
			B23-α

Order number



5d. Mitred connectors with an articulated anchor 90°

Order number

30	40	45	50
B221-90	C22-90	E22-90	A22-90
B221-90	C22-90	E22-90	
B221-90	C22-90		
B22-90			

Extrusions with a base of
50
45
40
30

50	45	40	30
A22-90	E22-90	C22-90	B221-90
	E22-90	C22-90	B221-90
		C22-90	B221-90
			B22-90

Order number

## Special connectors

### 6. Double mitre connectors

Order number										Order number									
B01-8	C02-8	A02-8	20*	20	30	40	45	50		50	45	40	30	20	20*	A02-8	C02-8	B01-8	
								A24-10											
								E24-10											
								C24-10											
								B24-10											
								D24-10											
								DD24-10											
								A24-51											
								C24-51											
								B24-51											

\*Core hole of 6.0 mm

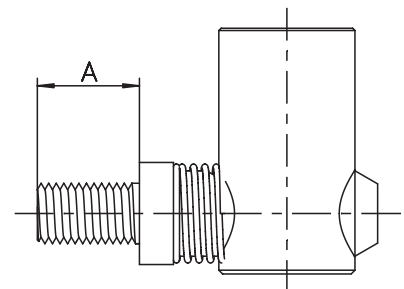
### 7. Extrusion extension connectors

Order number										Order number									
B01-8	C02-8	A02-8	20*	20	30	40	45	50		50	45	40	30	20	20*	A02-8	C02-8	B01-8	
								A24-00											
								E24-00											
								C24-00											
								B24-00											
								D24-00											
								DD24-00											
								A24-50											
								C24-50											
								B24-50											

\*Core hole of 6.0 mm

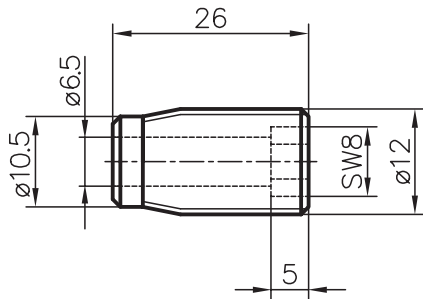
### 8. Threaded connectors

Order number										Order number									
Thread	M6	M8	A							50	45	40	30	20	20*	A02-8	C02-8	B01-8	
	A20-66	A20-60	13																
	E20-66	E20-60	13																
	C20-66	C20-60	13																
	B20-66	B20-60	10																
	D20-66	D20-60	10																
	DD20-66		7																
	on request	A20-65																	
	on request	C20-65																	
	on request	B20-65																	



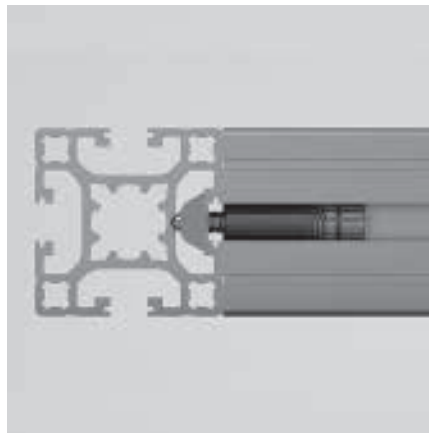
## PVS direct connectors

### Base 45



### Application

The extrusion does not need to be machined for this connection. This self-cutting threaded sleeve has a shank for an Allen key which is simply used to screw it into the longitudinal slot. The screw is mounted into the threaded sleeve in advance, thereby connecting the extrusion to the extrusion nuts in the counter extrusion. These can be installed afterwards. This stable connection, assembly is slightly more complex than with the PVS standard connector. The prerequisite for this connection is access on both sides to the slots.



Integrated connector



Threaded sleeve

### Note

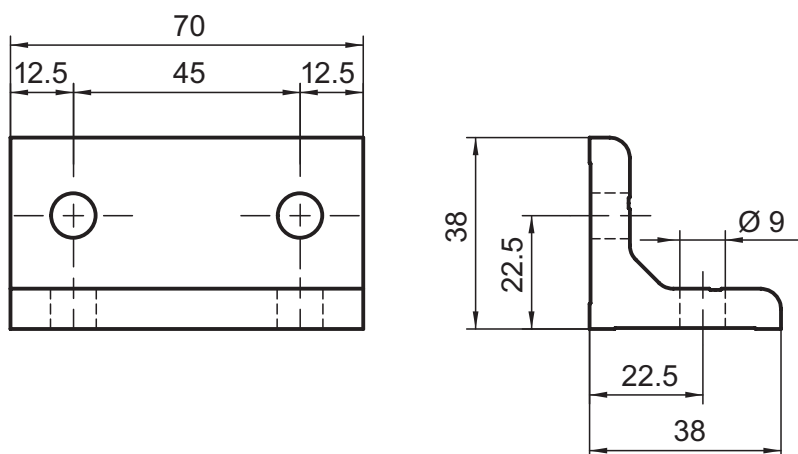
The side slots are blocked by the connection. Panels would therefore have to be machined the site of the fasteners.

### Parts supplied

- 2 screws
- 2 threaded sleeves
- 2 light extrusion nuts

Order data	Order number
Basis 45	E33-90

## Bracket Type E30-02

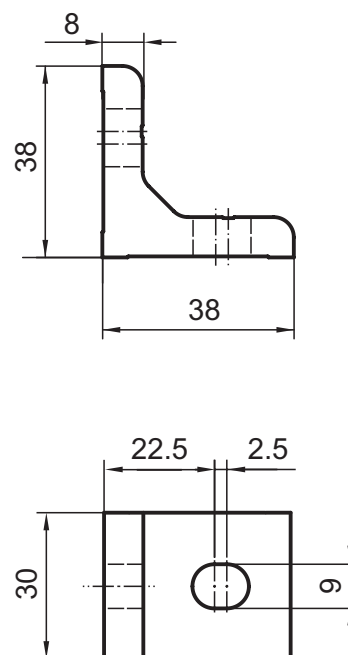


### Application

The mounting bracket is a pure connecting element used in combination with the PVS connector. It is primarily used however, as reinforcement.

Order data	Order number
Bracket 38x38x70	E30-02

## Bracket Typ AE30-00

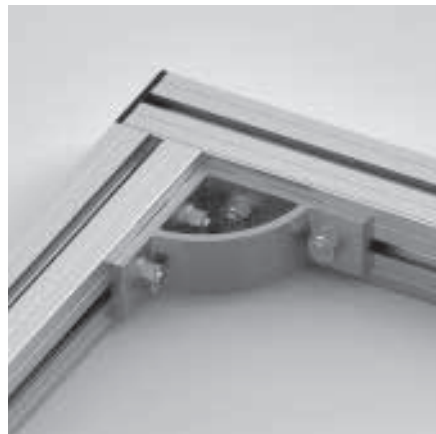
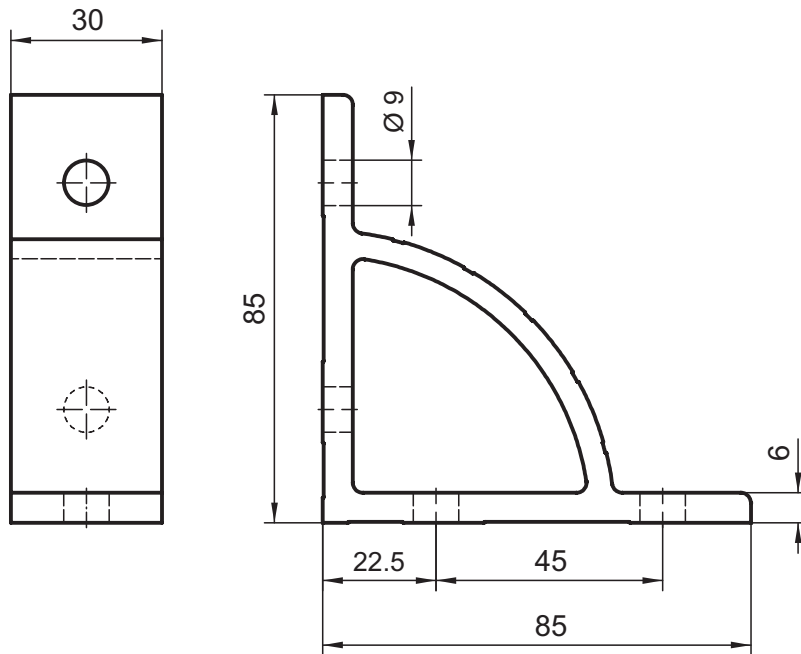


### Application

The slot allows the bracket to be used for both base 50 and base 45.

Order data	Order number
Bracket 38x38x30	AE30-00

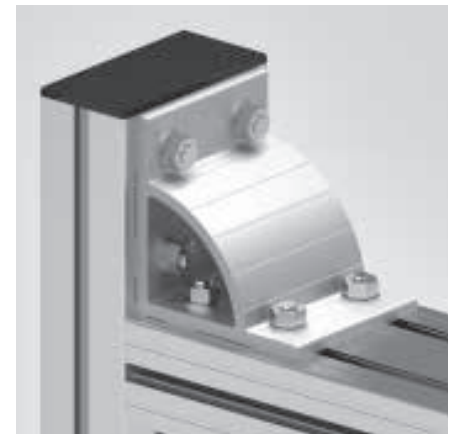
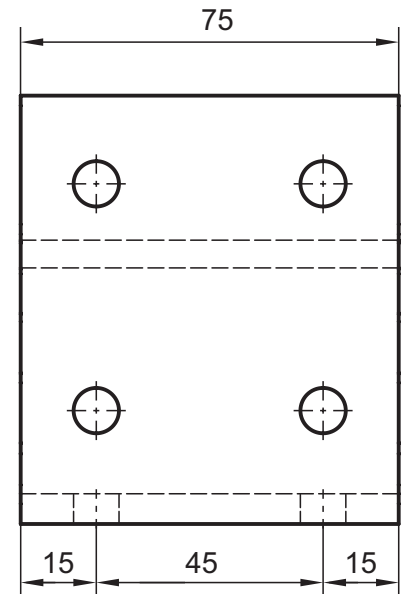
## Bracket Typ E30-30



### Application

The bracket is aligned in the centre distances for base 45. The elegant support arch permits good access for tightening the bolts.

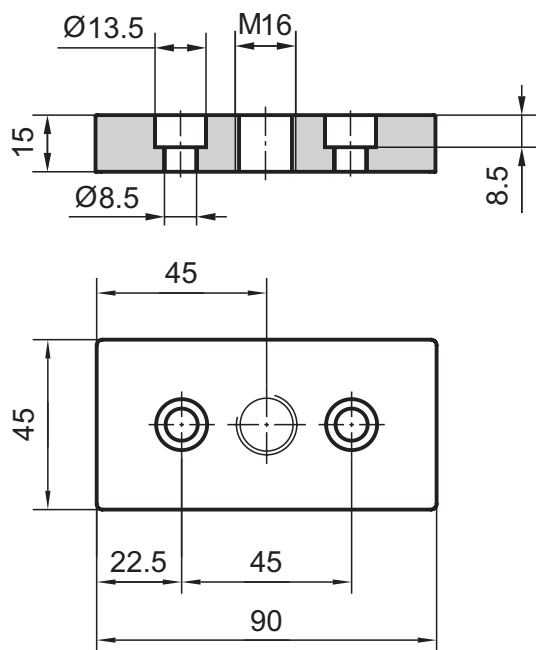
## Bracket Typ E30-32



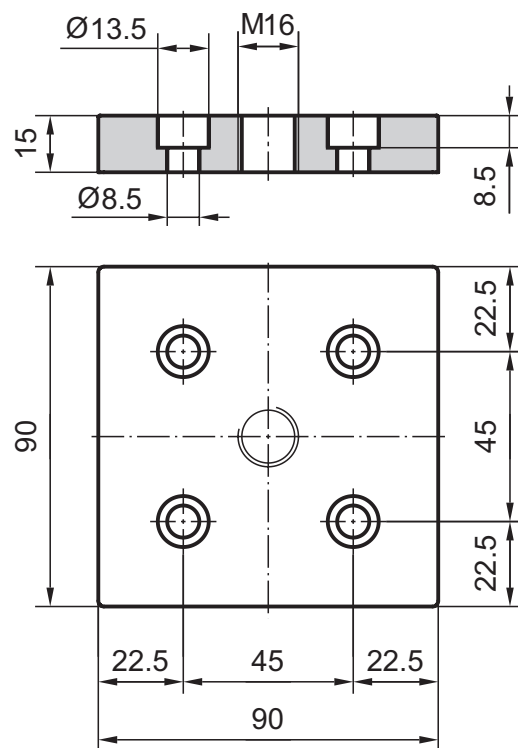
Order data	Order number
Bracket 85x85x30	E30-30

Order data	Order number
Bracket 85x85x75	E30-32

## Foot plate Type E80-24



## Foot plate Type E80-20



### Application

For use with extrusions without a central core hole when fixing levelling feet and casters.

### Specification

Aluminium, anodised in natural colours

### Fixing kit\*

Screws and threaded inserts



Order data	Order number
Foot plate 45x90x15	E80-24

\* Fixing kit: add -S to the order number

Example: E80-24-S

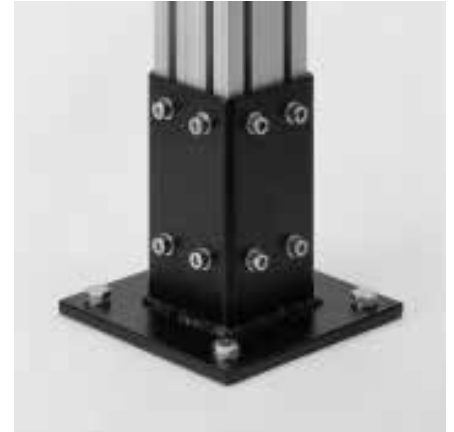
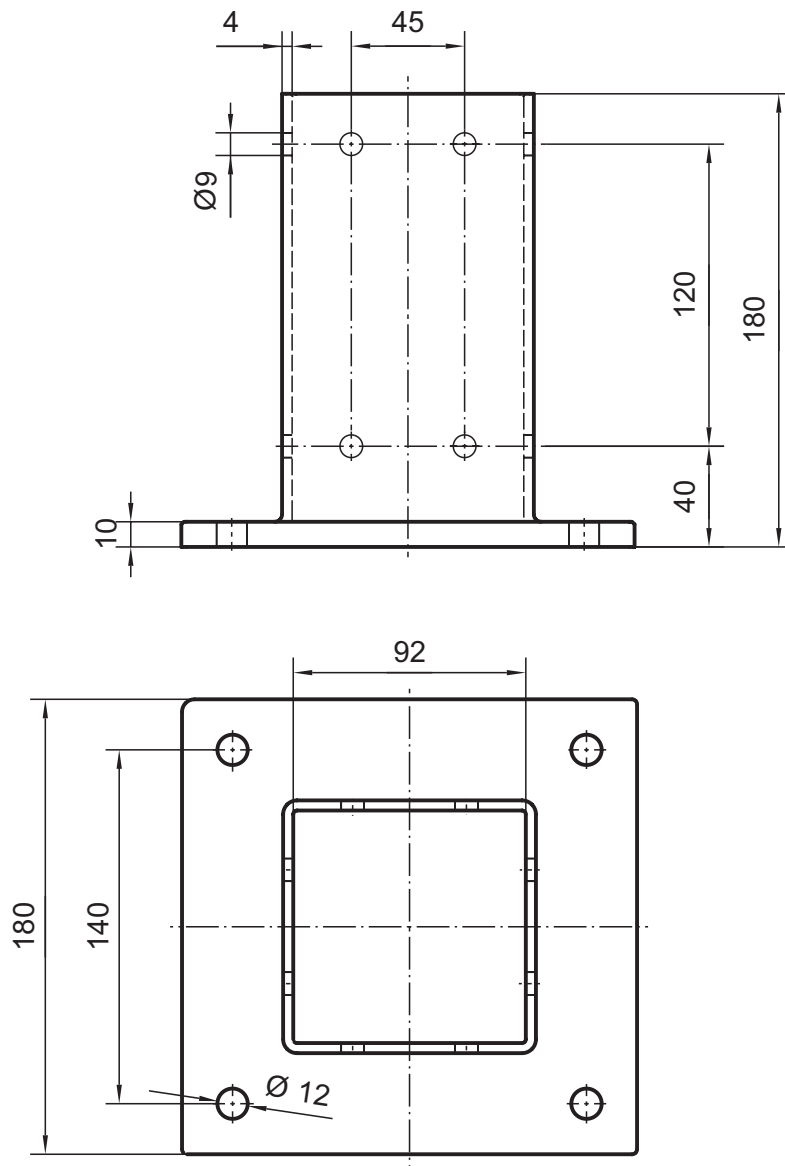
Order data	Order number
Foot plate 90x90x15	E80-20

\* Fixing kit: add -S to the order number

Example: E80-20-S



## Leg bolt-down socket Type E47-36



## Application

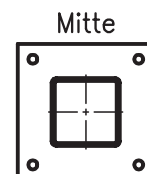
The bolt-down socket is used in applications where the legs have to be very firmly secured to the ground. The extrusion can be adjusted easily within the guide socket and can be secured in place using the fixing kit included. The bolt-down socket should be chosen, from the three available, to suit the space available.

## Specification

Steel, powder-coated in black

**Fixing kit\***

8 cylinder screws, 8 threaded plates  
8 washers

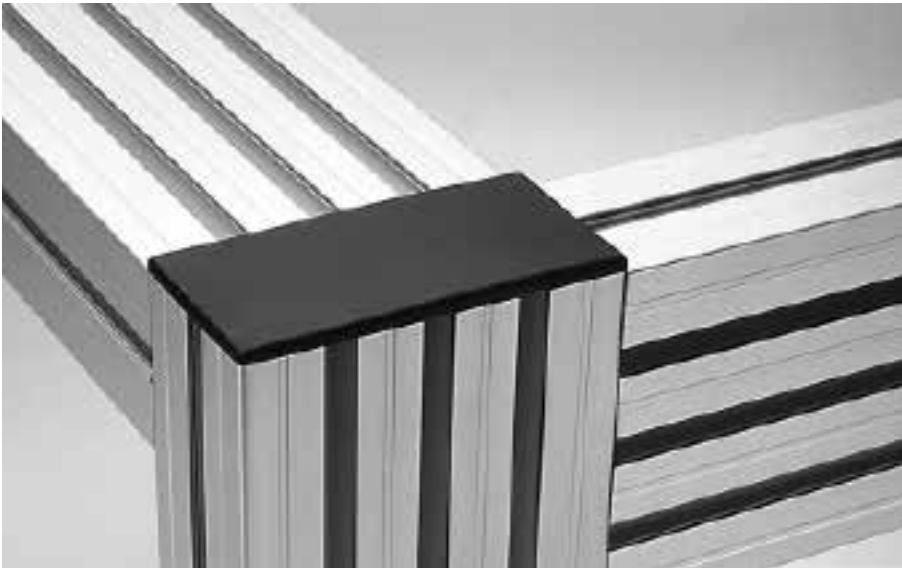


Order data	Order number
Leg bolt-down socket	E47-36

\* Fixing kit: add -S to the order number

Example: E47-36-S

End caps

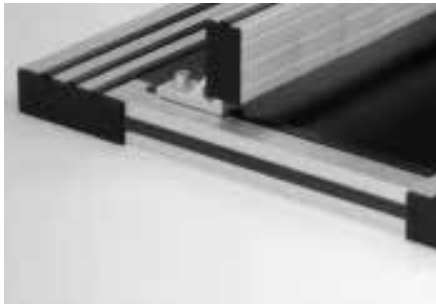


Application

End caps are used as covers for the exposed ends of extrusions. They prevent injury from the sharp edges of the extrusions. Special centring elements make them easy to fix and prevent the caps from twisting. Two end caps can be used together to cap off larger extrusions, eg extrusion 80x120 uses two 40x120 end caps.

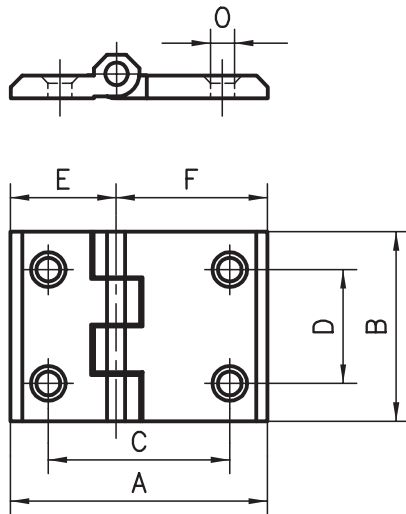
Specification

PA-GF, black	
Extrusion	Cap height
Base of 45	4 mm

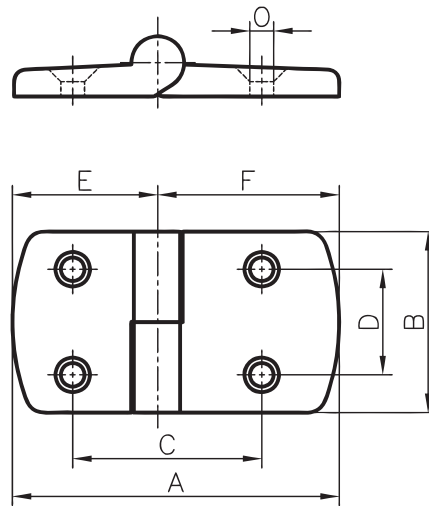


Order data		Order number
End caps	45x45	E40-10
End caps	45x90	E40-30
End caps	90x90	E40-50
End caps	45x45	E40-83 (extr. E03-1)

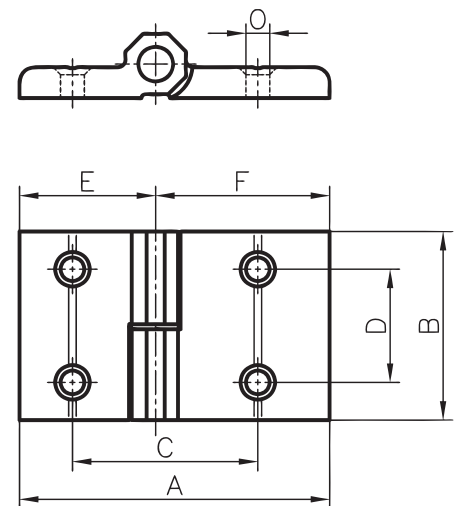
## Plastic hinges fix



## Plastic hinges lift-off type



## Aluminium hinges lift-off type



### Application

In order to ensure optimal pivoting characteristics for doors, windows etc., the designer needs a choice of hinges that from which the best fit can be chosen.

Whether cost efficient plastic, attractive diecasting, or high-strength Aluminium hinges, the assortment gives you the possibility to make the right choice.



### Specification

PA-GF black  
Pin: steel zinc coated



Image: right fixed type

### Specification

PA-GF black  
Pin: steel zinc coated



Image: left fixed type

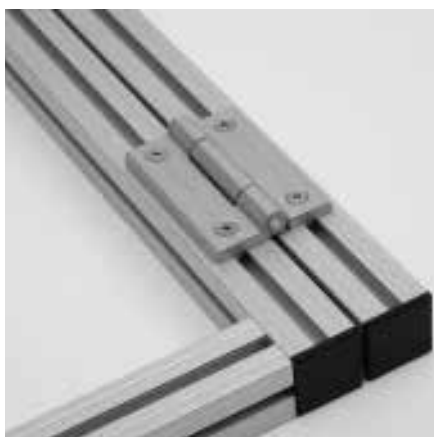
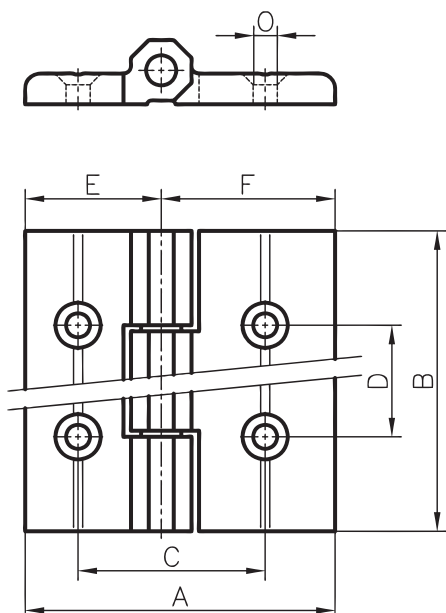
### Specification

Al anodised natural colours  
Pin: steel zinc coated

Order data								Order number	
Plastic hinges fix									
Base	A	B	C	D	E	F	O		
45	66	50	48	30	33	33	6.5	E60-00-PA *	
Plastic hinges lift-off type									
Base	A	B	C	D	E	F	O	left	right
45	87	48	50	28	43.5	43.5	6.6	E60-60-PA*	E60-61-PA*

Order data								Order number	
<b>Aluminium hinges lift-off type</b>								left	right
45	72	50	49	30	36	36	6.5	E60-60*	E60-61*
* the order number for the fixing kit add -S to the art.no.:									
Example: E60-60-PA-S									

## Heavy duty hinge fixed type



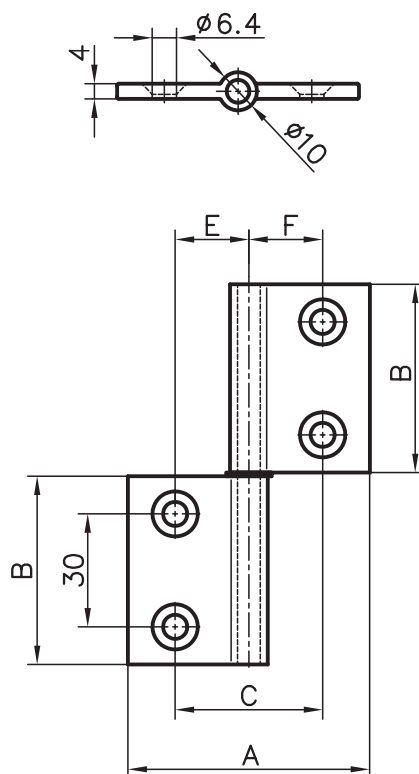
### Specification

Al, anodised natural colours

Pin: steel zinc coated

bush bearing: iglidur G, grey

## Aluminium flat hinge



### Application

The flat hinges are mounted in a concealed position. When the doors are closed, only the pivot point is visible. This provides an attractive design for doors. It also has the advantage that when the door is closed, the flat band hinge cannot be removed. This is important when considering the safety aspects.

### Specification

Anodised aluminium

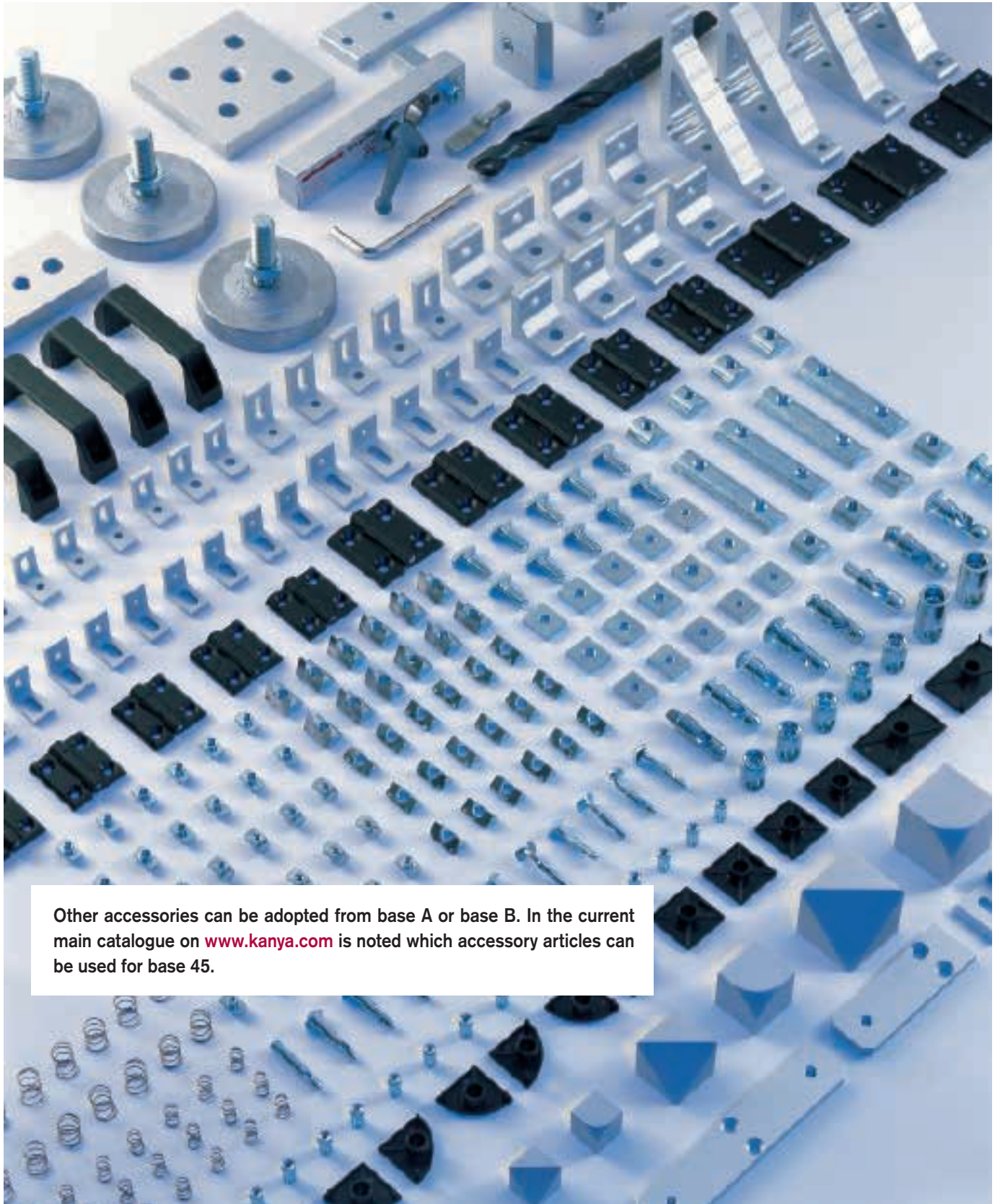
Pin: Stainless steel

Order data								Order number
Heavy duty hinge fixed type								
Base	A	B	C	D	E	F	O	
45	72	100	49	75	24.5	24.5	6.3	E60-30*

\* the order number for the fixing kit add -S to the art.no.:

Example: E60-30-S

Order data						Order number
Aluminium flat hinge						
Base	A	B	C	E	F	
50/45	94	50	57	29.5	27.5	AE6-29*
45	84	50	55	27.5	27.5	E60-29*
45/40	84	50	52.5	27.5	25	EC6-29*
45/30	74	50	47	27.5	19.5	EB6-29*



Other accessories can be adopted from base A or base B. In the current main catalogue on [www.kanya.com](http://www.kanya.com) is noted which accessory articles can be used for base 45.





**Internationally registered trademarks:**



**Certificate of Approval:**

**SN EN ISO 9001: 2008**

**Indications**

**Patent**

This catalogue contains products that are subject to international patent rights. Any imitation of such products constitutes a violation of the law and involves compensation for damages.

**Product liability**

KANYA's product liability is subject to Swiss substantive law only. KANYA is not liable for any further claims and in particular denies liability for copied products or own application of our products by the user.

May only reproduced in whole or in part with the permission of KANYA AG, Switzerland. The right to make technical modifications is reserved.

©by KANYA AG [05/2016 – 300]

# SIMPLY. INGENIOUS.

THE MODULAR SYSTEM FOR CUSTOMISED  
CONSTRUCTION SOLUTIONS



Kanya AG/SA/Ltd.  
Neuhofstrasse 9  
CH-8630 Rüti  
Switzerland

Phone +41 (0)55 251 58 58  
Fax +41 (0)55 251 58 68

e-mail [info@kanya.com](mailto:info@kanya.com)  
Internet [www.kanya.com](http://www.kanya.com)