

Linear measuring technology

| | | |
|--|------------------------------|--|
| Draw wire mechanics with absolute encoder | Draw wire encoder A41 | Measuring length max. 2 m Traverse speed max. 1 m/s |
|--|------------------------------|--|



The draw wire mechanics A41 with absolute encoder excels with its compact construction.

These draw wire mechanics can be equipped with multiturn encoders of the F366x series. The maximum measuring length is 2 metres.



Compact and simple

- Measuring length up to 2000 mm.
- For applications with low traverse speeds.
- Easy mounting.

Order code with encoder **D5.55 02 . XX XX . XXXX**

Type **a** **b** **c** **d** **e**

- | | | | |
|---|---|---|--|
| <p>a <i>Measuring range</i> 02 = 2000 mm</p> | <p>b <i>Encoder used</i> F3 = Sendix absolute F3663, SSI F8 = Sendix absolute F3668, CANopen</p> | <p>c <i>Output circuit</i> depends on the encoder used</p> | <p>e <i>Resolution / Protocol / Options</i> depends on the encoder used</p> |
| <p>d <i>Type of connection</i> depends on the encoder used</p> | | | |

| Standard resolutions for draw wire with absolute encoder Sendix F3663 or F3668 CANopen, drum circumference 100 mm | | |
|---|----------------|---|
| Absolute encoder | F3663 | F3668 CANopen |
| Pulses / revolution | 4096 / 12 bits | 4096, programmable via the bus / 12 bit |
| Pulses / mm | 41 | 41 |
| Resolution (mm) | ~ 0.02 | ~ 0.02 |

Recommended standard devices

| Order no. draw wire encoder | Mounted encoder | Interface | Power supply | Type of connection | Résolution / Protocole |
|-----------------------------|----------------------------------|-----------|----------------|----------------------|------------------------------|
| D5.5502.F321.G222 | Sendix F3663 (8.F3663.4121.G222) | SSI | 10 ... 30 V DC | tangential cable 1 m | 4096 ppr / SSI Gray code |
| D5.5502.F821.2122 | Sendix F3668 (8.F3668.4121.2122) | CANopen | 10 ... 30 V DC | tangential cable 1 m | CANopen encoder profile V3.2 |

Linear measuring technology

Linear measuring technology

Draw wire mechanics with absolute encoder

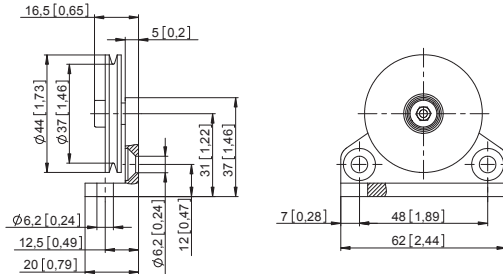
Draw wire encoder A41

**Measuring length max. 2 m
Traverse speed max. 1 m/s**

Guide pulley for draw wire encoder

Order no.

Guide pulley

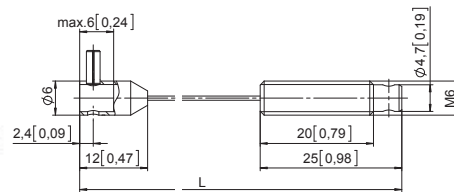


Order code for the set:

- Guide pulley (anodised aluminium)
- 2 x countersunk screws for lateral fixing
- 2 x hexagonal screws for fixing on a flat surface

8.0000.7000.0045

Extension cable



Steel wire 2 m [6.56']

Steel wire 5 m [16.40']

Steel wire 10 m [32.81']

Paraleine 2 m [6.56']

8.0000.7000.0033

8.0000.7000.0034

8.0000.7000.0035

8.0000.7000.0032

Technical data

Mechanical characteristics (draw wire mechanics)

| | |
|----------------------------|---|
| Measuring range | up to 2000 mm |
| Traversing speed | max. 1000 mm/s |
| Working temperature | -10°C ... +80°C [+14°F ... +176°F] |
| Weight | approx. 200 g [7.06 oz] |
| Required force | ≥ 2 N (on wire) |
| Linearity | ±0.35 % for the whole measuring range |
| Repetition accuracy | ±0.15 mm per direction of travel |
| Material | housing zinc die-cast wire stainless steel \varnothing 0.45 mm |

Electrical characteristics (encoder)

The electrical characteristics can be found in the data sheets of the encoders.

Dimensions

Dimensions in mm [inch]

