

Process controllers

LCD touch process controllers

2 standard signal inputs + 4 limit values, RS232 analog output

573T



The process controller with 2 analog inputs can be used in both single channel mode as well as in dual channel. In dual channel mode, all arithmetic operations are available for displaying the sum total, difference, ratio or the product. Inputs and outputs can be scaled separately.

Can be used as a simple process signal converter, process controller (ON/OFF controller) or for complex measuring tasks, where the relationship between two values, one to the other, must be monitored, calculated or further processed in a higher-level controller.

AC 115 ... 230V Power supply	DC 18 ... 30 V Power supply	 mA, V 2 inputs	 4 4 switching outputs	 2 Relay output	 mA, V Analog output	 16 bit Resolution analog output	 RS232 RS232 interface	 IP65 High protection level	 Tara Tare function	 DIN 96 x 48 DIN front bezel
 9 LCD LCD touch display	 Menu-driven programming	 Touch display	 Operation with gloves							

Innovative

- 2 separate freely scalable analog inputs ± 10 V and 0/4 ... 20 mA, resolution 16 bit.
- Tare function – the unit can be set to 0 for any input voltage.
- Programmable linearization: with up to 24 control points, input via key-pad or via the teach-in function.
- Averaging measurement over 2 to 16 measuring cycles, for use with serious fluctuations of the input signals.
- Easy to programme - the desired display value is simply keyed-in for a specific input signal.
- Fast 25 ms sampling rate per channel alternating.
- Serial interface RS232 for reading data in and out.

Compact and multifunctional

- Up to 3 display values in one device, display A, display B + display calculated based on A and B.
- AC and DC power supply in one device.
- Simple menu-driven programming via touch display, as well as tare or teach-in key.
- Can be used as a simple process signal converter, process controller (ON/OFF controller) or for complex measuring tasks where the relationship between two values, one to the other, must be monitored, calculated or further processed in a higher-level controller.
- Mathematical operation of the measured values of inputs A and B. The result can also if required be multiplied, divided or added to an offset value, in order to obtain the desired display value.
- Analog output 0/4 ... 20 mA or ± 10 V.
- 4 fast PNP switching outputs, 50 ms, with switching hysteresis, step or tracking preset.
- Programmable display refresh time.

Order code ¹⁾

6.573T . 01 X . X0X
a b c d

a Relay outputs
0 = 2 relay outputs
2 = without output

b Power supply
3 = 18 ... 30 V DC
E = 18 ... 30 V DC + 115 ... 230 V AC

c Further options
0 = none

d Electrical outputs
0 = none
1 = RS232, 4 switching outputs
2 = RS232, 4 switching outputs, analog output

Delivery specification

- Display 573T
- Gasket
- Mounting kit
- Manual German/English

Stock types

6.573T.012.301
6.573T.012.302
6.573T.010.302
6.573T.010.E02

1) Serial availability as from February 2017.

Process controllers

LCD touch process controllers	2 standard signal inputs + 4 limit values, RS232 analog output	573T
--------------------------------------	---	-------------

Accessories		Order no.
Mounting frame with cut-out 92 x 45 [3.62 x 1.77]	for snap-on mounting on 35 [1.38] top-hat DIN rail, for counters 96 x 48 [3.74 x 1.89] grey	G300005
OS6.0 software for parameter setting	can be downloaded at www.kuebler.com	

Suitable gaskets as well as further accessories can be found in the accessories section or in the accessories area of our website at: www.kuebler.com/accessories.

Technical data

General technical data	
Display	LCD touch display, 12 mm high 9 decades
Operating temperature	-20°C ... +60°C [-4°F ... +140°F] (non-condensing)
Storage temperature	-25°C ... +70°C [-13°F ... +158°F]
Altitude	up to 2000 m [6562']
Electrical characteristics	
Power supply	18 ... 30 V DC, with reverse polarity protection (rated voltage 24 V DC) 115 ... 230 V AC, 50/60 Hz
Current consumption DC	100 mA, without load
Power consumption AC	approx. 3 VA, without load
Auxiliary power supply (for encoder)	
AC supply	24 V DC ±15 %, 150 mA (up to +45°C) 80 mA (from +46°C)
DC supply	U _B - 1 V, 250 mA
EMC standards	EN 61000-6-2, EN 61000-6-3, EN 61000-6-4, EN 61326-3-2
Device safety	designed to EN 61010 part 1 protection class 2 application area pollution level 2
Mechanical characteristics	
Housing	ABS UL94-V-0
Weight	approx. 200 g
Protection	IP65 (front side) IP20 (rear side)
Terminals	max. 1.5 mm ²
Inputs	
2 analog inputs	0 ... 20 mA, 4 ... 20 mA -10 ... +10 V
Input resistance	current Ri = 100 Ohm voltage Ri = 30 kOhm
Measuring time per channel	25 ms (alternating)
Resolution	16 bit (15 bit + sign)
Accuracy	±0.1 % ±1 digit
3 control inputs	Cnt 1 - 3 PNP, 2 mA / Ri > 15 kΩ / 470 pF
Max. input frequency	Cnt 1 - 3 10 kHz
Input level HTL	LOW 0 ... 3 V HIGH 9 ... 30 V
Outputs	
Switching outputs	4 x PNP, max. 30 V, max. 200 mA reaction time max. 50 ms
Analog output	0 ... 20 mA, 4 ... 20 mA (max. 270 Ohm) -10 ... +10 V (max. 2 mA) reaction time max. 57 ms (analog output 7 ms after detection of the measurement value)
Interface	RS232 Drivecom Protokoll / Modbus / Printer 2400 ... 38400 Baud
Relay output	2 changeover contacts (potential free) max. 250 V AC / 3 A / 750 VA max. 150 V DC / 2 A / 50 W reaction time < 5 ms
Resolution	16 bit (15 bit + sign)

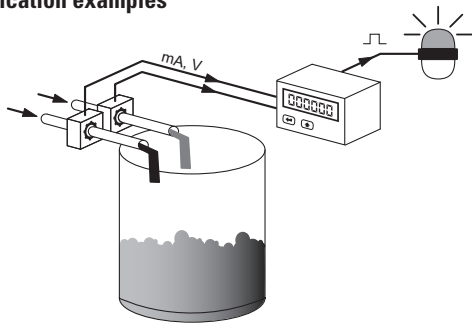
Process controllers

LCD touch process controllers

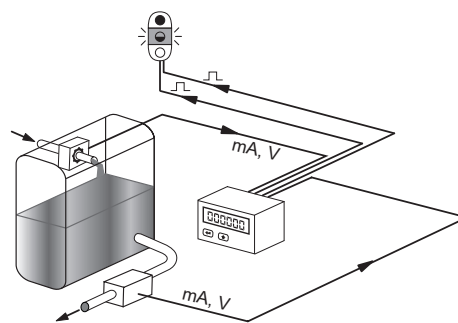
2 standard signal inputs + 4 limit values, RS232 analog output

573T

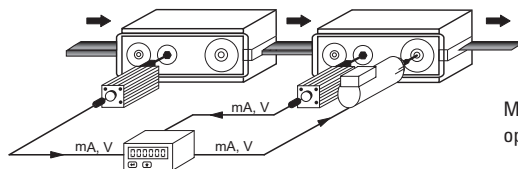
Application examples



Monitoring of mixing ratios and display of flow rate



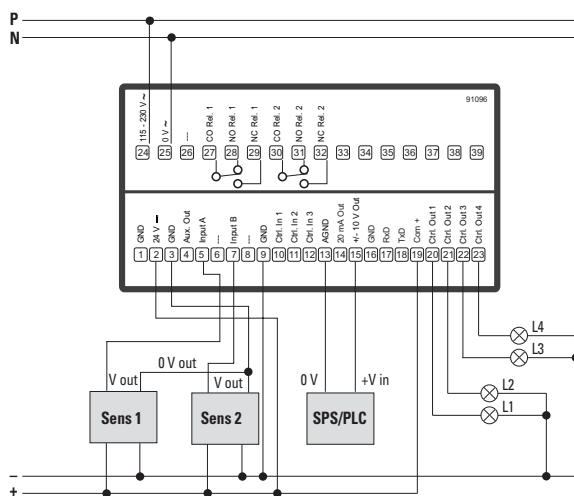
Level monitoring and adjustment, display of inflow and outflow



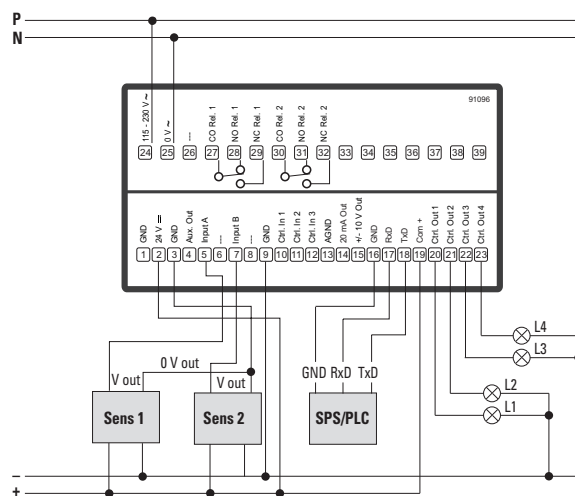
Material stretching, as well as monitoring of synchronous operation, with display of individual speeds

Connection example

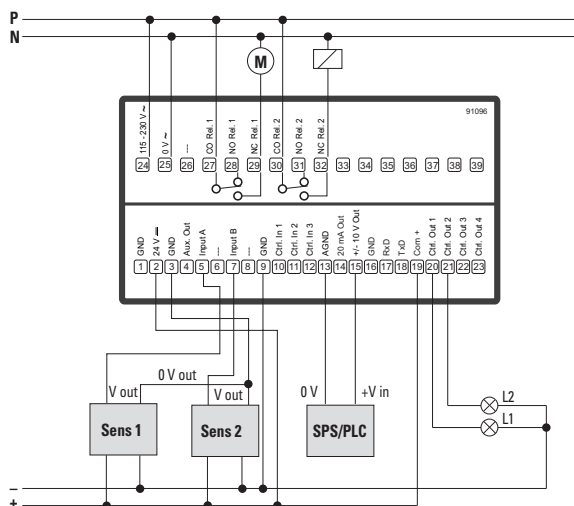
Analog input, analog output, switching outputs



Analog input, switching outputs, interface



Analog input, analog output, load output (relay)



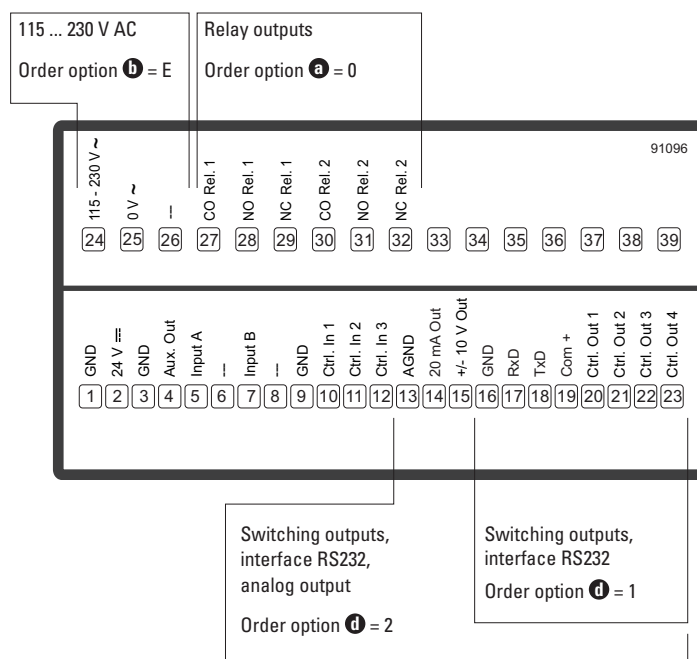
Process controllers

LCD touch process controllers

2 standard signal inputs + 4 limit values, RS232 analog output

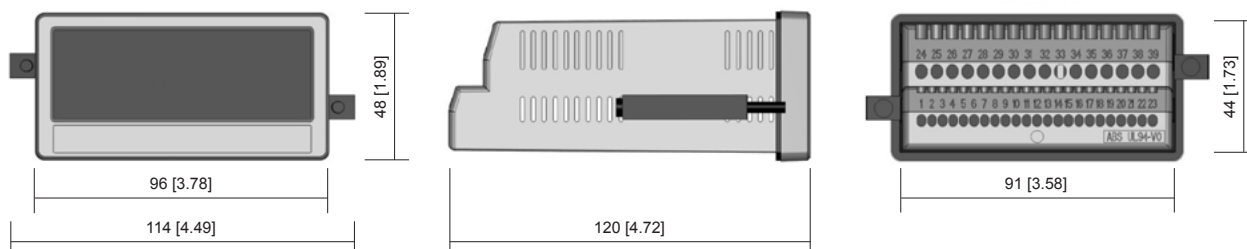
573T

Terminal assignment



Dimensions

Dimensions in mm [inch]



Panel cut-out
92 x 45 mm [3.62 x 1.77"]