



Elettromandrini serie rettangolare
Rectangular Electro-spindles

HSD

MECHATRONIC
DIVISION

HSD MECHATRONIC DIVISION

HSD SpA Mechatronic Division progetta e produce componenti tecnologicamente avanzati ad alta precisione per lavorazioni di fresatura, foratura e taglio su un'ampia gamma di materiali (legno, alluminio, plastica, marmo, vetro e metallo):

- Elettromandri a cambio automatico
- Elettromandri a cambio manuale
- Elettroteste a 2 assi
- Rinvii angolari per elettromandri
- Teste di foratura a mandrini indipendenti
- Smart Motors
- Gruppi Motorizzati

HSD SpA Mechatronic Division designs and produces technologically advanced, high precision components for milling, boring and cutting operations on a wide range of materials (wood, aluminium, plastic, marble, glass and metal):

- Automatic tool change electrospindles
- Manual tool change electrospindles
- 2 axis heads
- Right angle heads for electrospindles
- Independent spindle boring heads
- Smart Motors
- Motor powered units

Fondata nel 1991, HSD rappresenta oggi un punto di riferimento nel settore della componentistica riuscendo a conciliare ottimamente l'elevata qualità dei propri prodotti con un forte orientamento al mercato.

L'ampia gamma di prodotti consente ad HSD di rispondere alle specifiche esigenze del cliente con un'offerta strutturata e complementare mirata.

Founded in 1991, HSD is today a reference point in the components sector, managing to achieve an excellent combination of high quality products and a strong eye to the market.

The wide range of products means that HSD is able to respond to the specific needs of its customers through a specific, well structured, complementary offer.



HSD opera con i più moderni sistemi di controllo della propria produzione tra i quali:

- banco freno
- banco prova di rodaggio elettronico ed automatico
- sala metrologica dotata dei più moderni strumenti di misura dimensionali

Tutto questo avviene nel rispetto degli standard di verifica previsti dalle norme ISO9001. HSD, oltre alla casa madre italiana, opera direttamente con 3 filiali localizzate nei principali mercati mondiali con l'obiettivo di garantire un'assistenza pre e post vendita immediata ed altamente qualificata con personale istruito presso la casa madre:

- HSD USA (Fort Lauderdale, FL)
- HSD Deutschland (Göppingen)
- HSD China (Shanghai)

HSD works using the most up-to-date manufacturing control systems, including:

- braking bench
- electronic and automatic testing bench
- metrology lab equipped with all the most modern dimensional measuring instruments

All this in compliance with the test standards required by ISO9001 regulations. As well as the Italian parent company, HSD operates directly through 3 branches located on the main world markets, with the aim of ensuring immediate and highly qualified pre and post sales services using staff trained by the headquarter:

- HSD USA (Fort Lauderdale, FL)
- HSD Deutschland (Göppingen)
- HSD China (Shanghai)



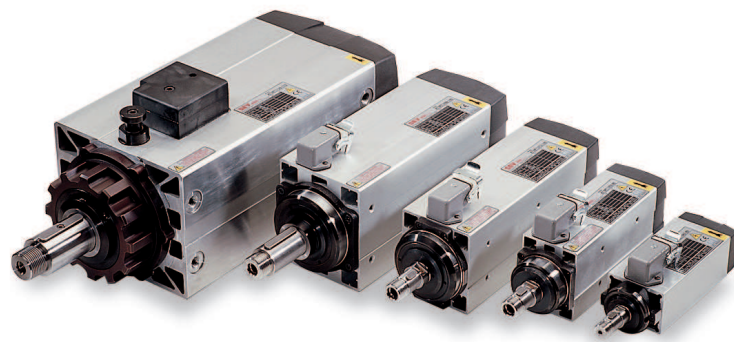
ELETTROMANDRINI SERIE RETTANGOLARE RECTANGULAR ELECTRO-SPINDLES

La famiglia di elettromandriani serie rettangolare è stata sviluppata ad alta densità di potenza per limitare gli ingombri, soprattutto per applicazioni su macchine utensili per legno, plastica, alluminio. La costruzione è realizzata con carcassa in estruso di alluminio con cave interne per il passaggio dell'aria di raffreddamento. I cuscinetti sono prelubrificati e a tenuta stagna, non necessitano di manutenzione e sono protetti da labirinti..

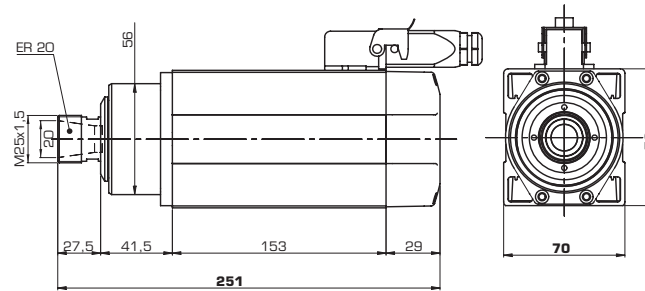
Gli elettromandriani serie rettangolare sono realizzati per meglio adattarsi alle varie condizioni di utilizzo sia per lavorazioni di fresatura, foratura e bordatura.

Le versioni con attacco pinza sono disponibili sia con ventola di raffreddamento ad alta efficienza che con ventola elettrica. L'ampia gamma di potenze, da 0,35kW a 13,5kW con velocità di rotazione fino a 24.000rpm consentono una versatilità di utilizzo che copre ogni tipo di lavorazione sia con carichi assiali che radiali. Il sistema "Qualità Senza Compromessi" adottato da HSD garantisce servizio e affidabilità indiscussi. Gli elettromandriani rettangolari sono prodotti nel rispetto delle normative e progettati per offrire al cliente una grande possibilità di sovraccarico.

Rectangular series electro-spindles are designed for high power density and compactness, making them ideal for wood, plastic and aluminium. The body structure is made of extruded aluminium casing with inner cooling air flow passages. Bearings are pre-lubricated, sealed, protected by labyrinths. They don't need maintenance. Rectangular series electro-spindles are realised to suit better at all different conditions of using both for milling, drilling and edgebending. Collet type are available with high efficiency cooling fan and also with electrical fan. The wide range of powers, from 0,35kW to 13,5kW with rotation speed up to 24.000 rpm allow a wide-using versatility that covers all kind of working conditions with axials and radial force. "Quality without Compromises" system is the rule in HSD organisation and guarantees unquestionable service and the highest reliability. Rectangular series electro-spindle are manufactured in respect of the norms and are planned to offer a wide possibility of overloading.

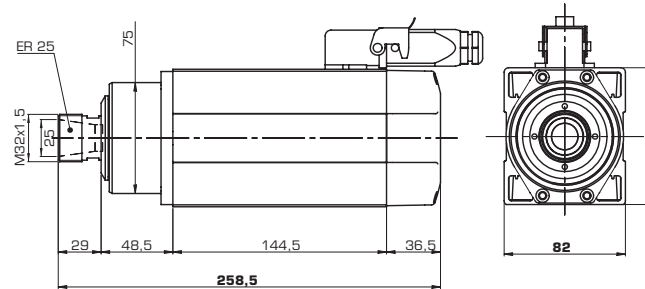


Serie rettangolare / Rectangular series



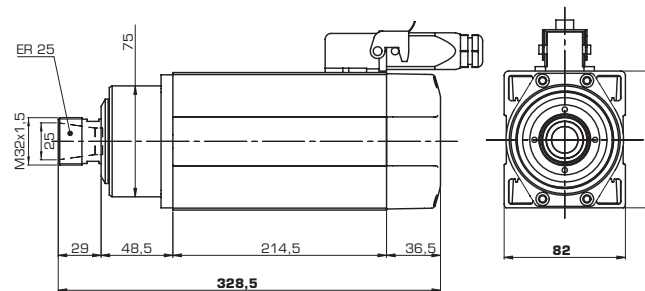
MT1055-090

Pinza / Collet ER20
Potenza / Power
0,65kW
1,30kW
RPM 12000 - 24000
Volt 220/380



MT1073-060

Pinza / Collet ER25
Potenza / Power
1,00kW
1,80kW
RPM 12000 - 24000
Volt 220/380



MT1073-120

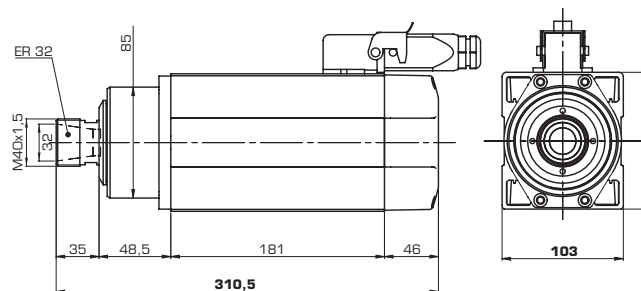
Pinza / Collet ER25
Potenza / Power
2,00kW
3,60kW
RPM 12000 - 24000
Volt 220/380

ELETTROMANDRINI SERIE PINZA

COLLET SERIES ELECTRO-SPINDLES

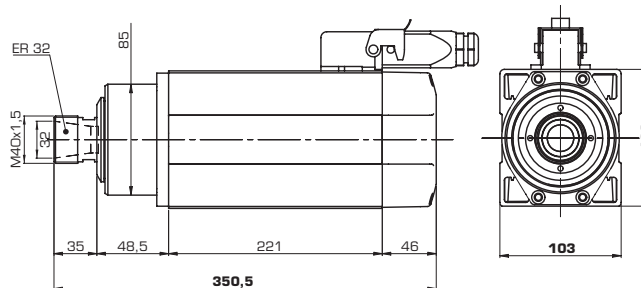
MT1090-100

Pinza / Collet ER32
 Potenza / Power 3,00kW
 5,40kW
 RPM 12000 - 24000
 Volt 220/380



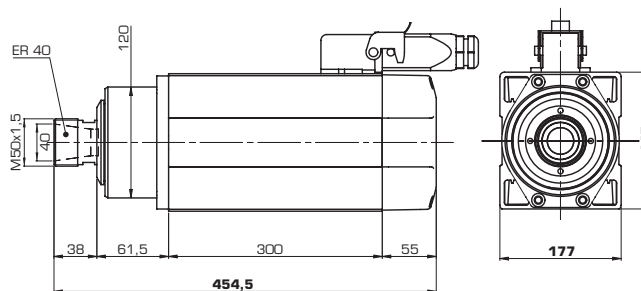
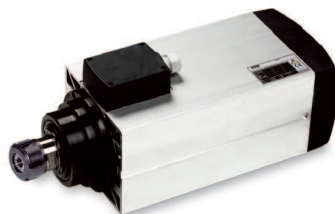
MT1090-140

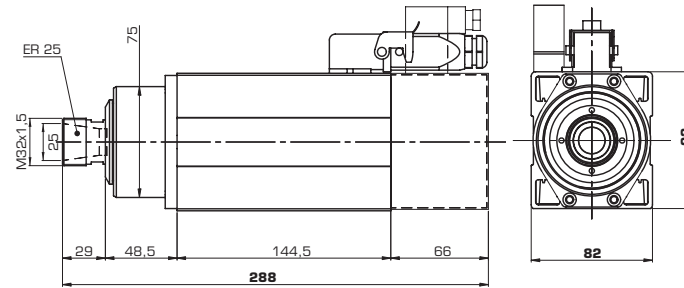
Pinza / Collet ER32
 Potenza / Power 4,00kW
 7,20kW
 RPM 12000 - 24000
 Volt 220/380



MT1120-170

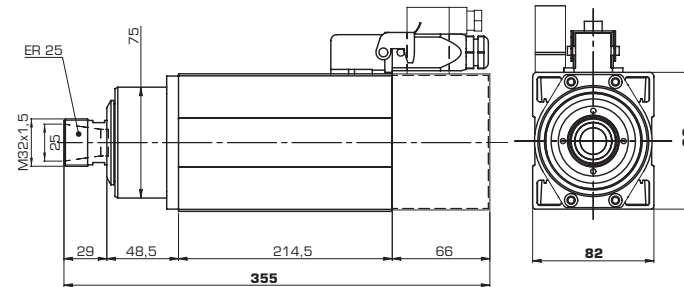
Pinza / Collet ER40
 Potenza / Power 12kW
 16,20kW
 RPM 12000 - 18000
 Volt 380





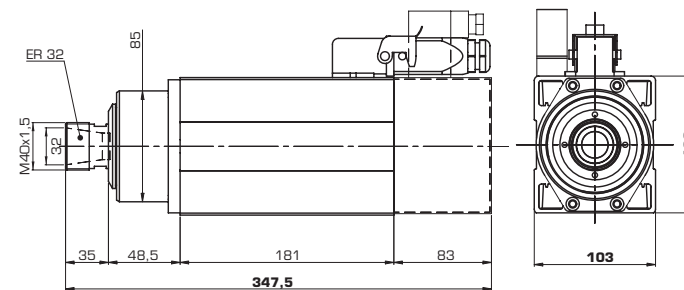
MT1073-060

Pinza / Collet ER25
Potenza / Power 0,70kW
1,40kW
RPM 12000 - 24000
Volt 220/380



MT1073-120

Pinza / Collet ER25
Potenza / Power 1,40kW
2,80kW
RPM 12000 - 24000
Volt 220/380



MT1090-100

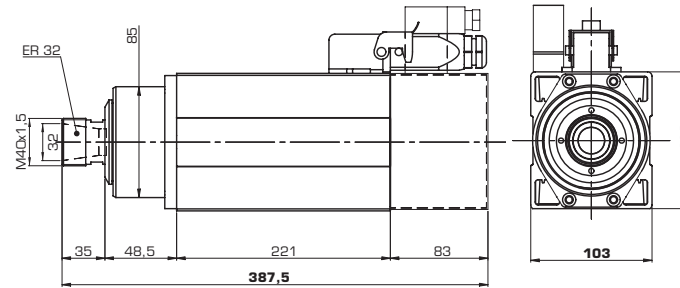
Pinza / Collet ER32
Potenza / Power 1,60kW
3,20kW
RPM 12000 - 24000
Volt 220/380

ELETTROMANDRINI SERIE PINZA

COLLET SERIES ELECTRO-SPINDLES

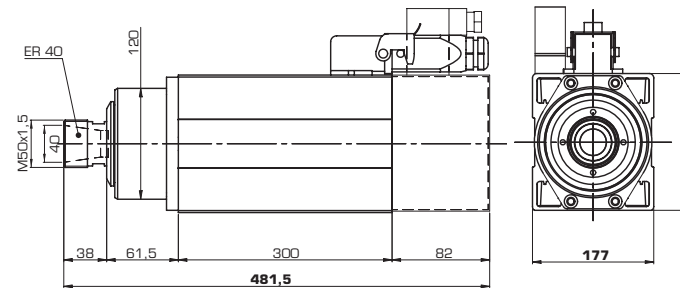
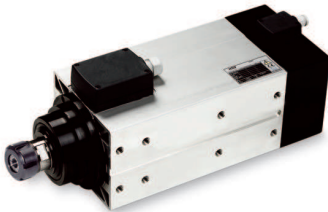
MT1090-140

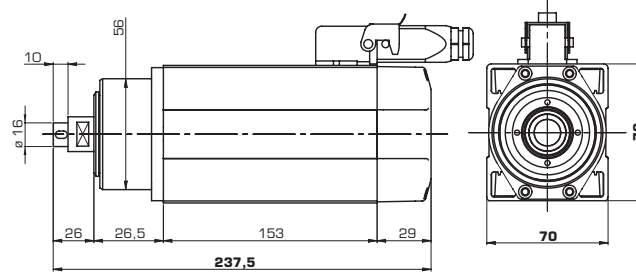
Pinza / Collet ER32
 Potenza / Power
 3,40kW
 5,10kW
 RPM 12000 - 24000
 Volt 220/380



MT1120-170

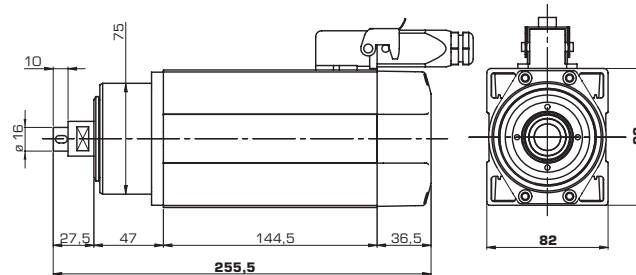
Pinza / Collet ER40
 Potenza / Power
 10,00kW - 13,50kW
 RPM 12000 - 18000
 Volt 380





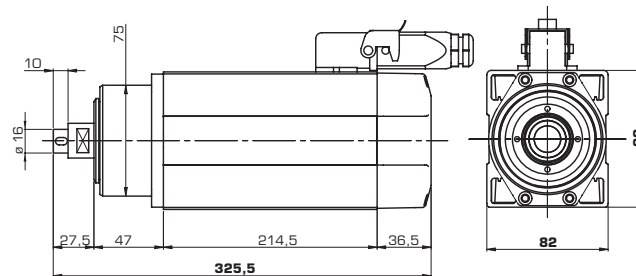
AT1055-090

Linguetta / Keyed
 Potenza / Power 0,65kW
 0,85kW
 RPM 12000
 Volt 220/380



AT1073-060

Linguetta / Keyed
 Potenza / Power 1,00kW
 1,30kW
 RPM 12000
 Volt 220/380

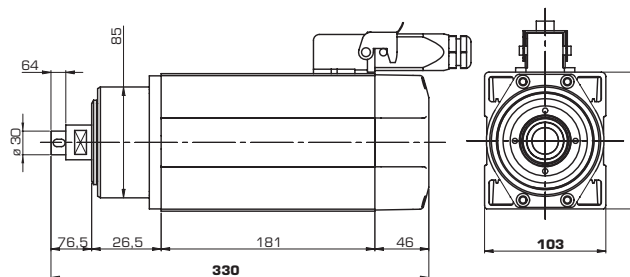


AT1073-120

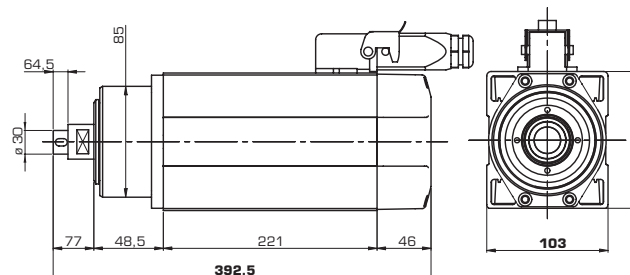
Linguetta / Keyed
 Potenza / Power 2,00kW
 2,40kW
 RPM 12000
 Volt 220/380

ATI090-100

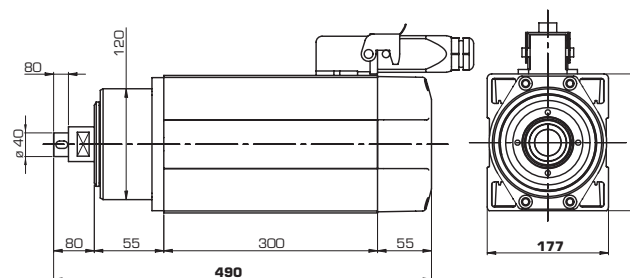
Linguetta / Keyed
 Potenza / Power 3,50kW
 4,20kW
 RPM 12000
 Volt 220/380


ATI090-140

Linguetta / Keyed
 Potenza / Power 5,00kW
 6,00kW
 RPM 12000
 Volt 220/380


ATI120-170

Linguetta / Keyed
 Potenza / Power 5,60kW
 13,50kW
 RPM 6000
 Volt 380



- PINZA / COLLET
- LINGUETTA / KEYED
- PINZA ELETTROVENTOLA / ELECTRIC FAN

CODICI **ELETTROMANDRINI** SERIE RETTANGOLARE
RECTANGULAR **ELECTRO-SPINDLES**



I055

Codice Code	Taglia Size	Attacco Coupling	Tensione Voltage	Rotaz. Rot.	Vel. Nom./max. RPM	KW S1	KW S6	% S6	N° Poli Poles N°	Connes. Plug	Uscita cavi Cable exit
Y6162Y0002	MT	1055-090	ER 20	380V	Dx	12/12000	0,65	0,85	40	2	CONN. / PLUG ANT. / FRONT
Y6162Y0003	MT	1055-090	ER 20	380V	Dx	18/24000	1,00	1,30	40	2	CONN. / PLUG ANT. / FRONT
Y6162Y0033	MT	1055-090	ER 20	380V	Dx	18/24000	1,00	1,30	40	2	CONN. / PLUG POST. / REAR
Y6162Y0077	MT	1055-090	ER 20	380V	Dx	18/24000	1,00	1,30	40	2	CONN. / PLUG POST. / REAR
Y6162Y0004	MT	1055-090	ER 20	220V	Dx	12/12000	0,65	0,85	40	2	CONN. / PLUG ANT. / FRONT
Y6162Y0005	MT	1055-090	ER 20	220V	Dx	18/24000	1,00	1,30	40	2	CONN. / PLUG ANT. / FRONT
Y6164Y0001	AT	1055-090	KEYED	380V	Dx	12/12000	0,65	0,85	40	2	CONN. / PLUG POST. / REAR
Y6164Y0003	AT	1055-090	KEYED	380V	Dx	12/12000	0,65	0,85	40	2	CONN. / PLUG POST.+ CONN. RUOT./TURNED
Y6164Y0006	AT	1055-090	KEYED	380V	Dx	12/12000	0,65	0,85	40	2	CONN. / PLUG ANT. / FRONT

I073

Y6162Y0006	MT	1073-060	ER25	380V	Dx	12/12000	1,00	1,30	40	2	CONN. / PLUG POST. / REAR
Y6162Y0007	MT	1073-060	ER25	380V	Dx	18/18000	1,50	1,80	40	2	CONN. / PLUG POST. / REAR
Y6162Y0041	MT	1073-060	ER25	380V	Dx	18/18000	1,50	1,80	40	2	CONN. / PLUG POST. / REAR
Y6162Y0008	MT	1073-060	ER25	380V	Dx	18/24000	1,50	1,80	60	2	CONN. / PLUG POST. / REAR
Y6162Y0009	MT	1073-060	ER25	220V	Dx	12/12000	1,00	1,30	40	2	CONN. / PLUG POST. / REAR
Y6162Y0010	MT	1073-060	ER25	220V	Dx	18/18000	1,50	1,80	40	2	CONN. / PLUG POST. / REAR
Y6162Y0011	MT	1073-060	ER25	220V	Dx	18/24000	1,50	1,80	40	2	CONN. / PLUG POST. / REAR
Y6162Y0054	MT	1073-060-EL	ER25	380V	Dx	18/18000	1,10	1,38	40	2	CONN. / PLUG POST. / REAR
Y6162Y0047	MT	1073-060-EL	ER25	380V	Dx	18/24000	1,10	1,38	40	2	CONN. / PLUG POST. / REAR
Y6162Y0055	MT	1073-060-EL	ER25	220V	Dx	18/18000	1,10	1,38	40	2	CONN. / PLUG POST. / REAR
Y6162Y0056	MT	1073-060-EL	ER25	220V	Dx	18/24000	1,10	1,38	40	2	CONN. / PLUG POST. / REAR
Y6162Y0012	MT	1073-120	ER25	380V	Dx	12/12000	2,00	2,40	40	2	CONN. / PLUG POST. / REAR
Y6162Y0013	MT	1073-120	ER25	380V	Dx	18/18000	3,00	3,60	40	2	CONN. / PLUG POST. / REAR
Y6162Y0069	MT	1073-120	ER25	380V	Sx	18/18000	3,00	3,60	40	2	CONN. / PLUG POST. / REAR
Y6162Y0014	MT	1073-120	ER25	380V	Dx	18/24000	3,00	3,60	40	2	CONN. / PLUG POST. / REAR
Y6162Y0071	MT	1073-120	ER25	380V	Dx	18/24000	3,00	3,60	40	2	CONN. / PLUG POST. / REAR

CODICI ELETTROMANDRINI SERIE RETTANGOLARE
RECTANGULAR ELECTRO-SPINDLES

PINZA / COLLET



LINGUETTA / KEYED

PINZA ELETTROVENTOLA / ELECTRIC FAN

Codice Code	Taglia Size	Attacco Coupling	Tensione Voltage	Rotaz. Rot.	Vel. Nom./max. RPM	KW S1	KW S6	% S6	N° Poli Poles N°	Connes. Plug	Uscita cavi Cable exit	
Y6162Y0015	MT	1073-120	ER25	220V	Dx	12/12000	2,00	2,40	40	2	CONN./ PLUG	POST./ REAR
Y6162Y0016	MT	1073-120	ER25	220V	Dx	18/18000	3,00	3,60	40	2	CONN./ PLUG	POST./ REAR
Y6162Y0050	MT	1073-120	ER25	220V	Sx	18/18000	3,00	3,60	40	2	CONN./ PLUG	POST./ REAR
Y6162Y0017	MT	1073-120	ER25	220V	Dx	18/24000	3,00	3,60	40	2	CONN./ PLUG	POST./ REAR
Y6162Y0057	MT	1073-120-EL	ER25	380V	Dx	18/18000	2,10	2,80	40	2	CONN./ PLUG	POST./ REAR
Y6162Y0034	MT	1073-120-EL	ER25	380V	Dx	18/24000	2,10	2,80	40	2	CONN./ PLUG	POST./ REAR
Y6162Y0058	MT	1073-120-EL	ER25	220V	Dx	18/18000	2,10	2,80	40	2	CONN./ PLUG	POST./ REAR
Y6162Y0040	MT	1073-120-EL	ER25	220V	Dx	18/24000	2,10	2,80	40	2	CONN./ PLUG	POST./ REAR
Y6164Y0007	AT	1073-030	KEYED	380V	Dx	12/12000	0,42	0,50	40	2	MORS./TERMI-NAL BOX	ANT./ FRONT
Y6164Y0009	AT	1073-045	KEYED	380V	Dx	12/12000	0,75	0,90	40	2	CONN./ PLUG	POST./ REAR
Y6164Y0029	AT	1073-045	KEYED	380V	Dx	12/12000	0,80	0,96	40	2	CONN./ PLUG	ANT./ FRONT
Y6164Y0012	AT	1073-060	KEYED	380V	Dx	12/12000	1,00	1,30	40	2	CONN./ PLUG	POST./ REAR
Y6164Y0014	AT	1073-120	KEYED	380V	Dx	12/12000	2,00	2,40	40	2	CONN./ PLUG	POST./ REAR
Y6162Y0018	MT	1090-100	ER32	380V	Dx	12/12000	3,50	4,20	40	2	CONN./ PLUG	ANT./ FRONT
Y6162Y0019	MT	1090-100	ER32	380V	Dx	18/18000	4,50	5,40	40	2	CONN./ PLUG	ANT./ FRONT
Y6162Y0053	MT	1090-100	ER32	380V	Dx	18/18000	4,50	5,40	40	2	CONN./ PLUG	POST./ REAR
Y6162Y0020	MT	1090-100	ER32	380V	Dx	18/24000	4,50	5,40	40	2	CONN./ PLUG	ANT./ FRONT
Y6162Y0021	MT	1090-100	ER32	220V	Dx	12/12000	3,50	4,20	40	2	MORS./TERMI-NAL BOX	ANT./ FRONT
Y6162Y0022	MT	1090-100	ER32	220V	Dx	18/18000	4,50	5,40	40	2	MORS./TERMI-NAL BOX	ANT./ FRONT
Y6162Y0023	MT	1090-100	ER32	220V	Dx	18/24000	4,50	5,40	40	2	MORSETTIERA	ANT./ FRONT
Y6162Y0059	MT	1090-100-EL	ER32	380V	Dx	18/18000	2,50	3,20	40	2	CONN./ PLUG	ANT./ FRONT
Y6162Y0035	MT	1090-100-EL	ER32	380V	Dx	18/24000	2,50	3,20	40	2	CONN./ PLUG	ANT./ FRONT
Y6162Y0060	MT	1090-100-EL	ER32	220V	Dx	18/18000	2,50	3,20	40	2	MORS./TERMI-NAL BOX	ANT./ FRONT
Y6162Y0061	MT	1090-100-EL	ER32	220V	Dx	18/24000	2,50	3,20	40	2	MORS./TERMI-NAL BOX	ANT./ FRONT
Y6162Y0027	MT	1090-140	ER32	380V	Dx	12/12000	5,00	6,00	40	2	CONN./ PLUG	ANT./ FRONT

1073

1090

	PINZA / COLLET
	LINGUETTA / KEYED
	PINZA ELETTROVENTOLA / ELECTRIC FAN

CODICI **ELETTROMANDRINI** SERIE RETTANGOLARE
RECTANGULAR **ELECTRO-SPINDLES**

13

1090

Codice Code	Taglia Size	Attacco Coupling	Tensione Voltage	Rotaz. Rot.	Vel. Nom./max. RPM	KW S1	KW S6	% S6	N° Poli Poles N°	Connes. Plug	Uscita cavi Cable exit	
Y6162Y0028	MT	1090-140	ER32	380V	Dx	18/18000	6,00	7,20	40	2	CONN./ PLUG	ANT./ FRONT
Y6162Y0029	MT	1090-140	ER32	380V	Dx	18/24000	6,00	7,20	40	2	CONN./ PLUG	ANT./ FRONT
Y6162Y0030	MT	1090-140	ER32	220V	Dx	12/12000	5,00	6,00	40	2	MORS./TERMI-NAL BOX	ANT./ FRONT
Y6162Y0031	MT	1090-140	ER32	220V	Dx	18/18000	6,00	7,20	40	2	MORS./TERMI-NAL BOX	ANT./ FRONT
Y6162Y0032	MT	1090-140	ER32	220V	Dx	18/24000	6,00	7,20	40	2	MORS./TERMI-NAL BOX	ANT./ FRONT
	MT	1090-140	ER32	380/220V	Dx	14/18000	8,50			4	MORS./TERMI-NAL BOX	ANT./ FRONT
Y6162Y0062	MT	1090-140-EL	ER32	380V	Dx	18/18000	3,90	5,10	40	2	CONN./ PLUG	ANT./ FRONT
Y6162Y0036	MT	1090-140-EL	ER32	380V	Dx	18/24000	3,90	5,10	40	2	CONN./ PLUG	ANT./ FRONT
Y6162Y0076	MT	1090-140-EL	ER32	380V	Dx	18/24000	3,90	5,10	40	2	CONN./ PLUG	ANT./ FRONT
Y6162Y0063	MT	1090-140-EL	ER32	220V	Dx	18/18000	3,90	5,10	40	2	MORS./TERMI-NAL BOX	ANT./ FRONT
Y6162Y0064	MT	1090-140-EL	ER32	220V	Dx	18/24000	3,90	5,10	40	2	MORS./TERMI-NAL BOX	ANT./ FRONT
Y616109095	MT	1090-140-EL	ER32	380/220V	Dx	14/18000	7,00			2	MORS./TERMI-NAL BOX	POST./ REAR
Y616109094	MT	1090-140-EL	ER32	380/220V	Dx	14/24000	7,00			2	MORS./TERMI-NAL BOX	POST./ REAR
Y6164Y0015	AT	1090-100	KEYED	380V	Dx	12/12000	3,50	4,20	40	2	CONN./ PLUG	POST.+ CONN. RUOT/TURNED
Y6164Y0016	MT	1090-100	KEYED	380V	Dx	12/12000	5,00	6,00	40	2	CONN./ PLUG	ANT./ FRONT
Y6164Y0022	MT	1090-100	KEYED	380V	Dx	12/12000	5,00	6,00	40	2	CONN./ PLUG	ANT./ FRONT

CODICI ELETTROMANDRINI SERIE RETTANGOLARE
RECTANGULAR ELECTRO-SPINDLES
 PINZA / COLLET

 LINGUETTA / KEYED

 PINZA ELETTROVENTOLA / ELECTRIC FAN

Codice Code	Taglia Size	Attacco Coupling	Tensione Voltage	Rotaz. Rot.	Vel. Nom./max. RPM	KW S1	KW S6	% S6	N° Poli Poles N°	Connes. Plug	Uscita cavi Cable exit	
Y616112015	MT	1120-170	ER40	380V	Dx	12/18000	13,50	16,20	40	4	MORS./TERMI-NAL BOX	ANT./ FRONT
Y616112016	MT	1120-170	ER40	380V	Dx	6/6000	8,10	9,70	40	4	CONN./ PLUG	ANT./ FRONT
Y616112017	MT	1120-170	ER40	380V	Dx	12/18000	13,50	16,20	40	4	CONN./ PLUG	ANT./ FRONT
Y616112010	MT	1120-170	ER40	380V	Dx	12/12000		13,50	60	4	CONN./ PLUG	ANT./ FRONT
Y6164Y0017	MT	1120-170	KEYED	380V	Dx	6/6000	8,10	9,50	40	4	MORS./TERMI-NAL BOX	ANT./ FRONT
Y6164Y0018	MT	1120-170	KEYED	380V	Dx	6/6000	5,80	7,50	40	4	MORS./TERMI-NAL BOX	ANT./ FRONT
Y6164Y0019	MT	1120-170	SPEC	380V	Dx	6/6000	5,80	7,50	40	4	MORS./TERMI-NAL BOX	ANT./ FRONT
Y6164Y0020	MT	1120-170	SPEC	380V	Dx	6/6000	8,10	9,50	40	4	MORS./TERMI-NAL BOX	ANT./ FRONT
Y6164Y0023	MT	1120-170	KEYED	380V	Dx	6/6000	11,00	13,50	40	4	MORS./TERMI-NAL BOX	ANT./ FRONT
Y6164Y0024	MT	1120-170	SPEC	380V	Dx	6/6000	11,00	13,50	40	4	MORS./TERMI-NAL BOX	ANT./ FRONT

1120

Dati tecnici ed illustrazioni non sono impegnativi, nell'ambito del continuo miglioramento dei propri prodotti Hsd Mechatronic Division si riserva il diritto di apportare eventuali modifiche senza preavviso.

Technical data and illustrations are not binding, and for the sake of continual improvement of its products Hsd Mechatronic Division reserves the right to make modifications without prior notice.

-  PINZA / COLLET
-  LINGUETTA / KEYED
-  PINZA ELETTROVENTOLA / ELECTRIC FAN

CODICI **ELETTROMANDRINI** SERIE RETTANGOLARE
RECTANGULAR **ELECTRO-SPINDLES**

15

0911

Codice Code	Taglia Size	Attacco Coupling	Tensione Voltage	Rotaz. Rot.	Vel. Nom./max. RPM	KW S1	KW S6	% S6	N° Poli Poles N°	Connes. Plug	Uscita cavi Cable exit
	MT	1160-120	KEYED	380V	Dx	3-6/9000	4 - 7		2	MORS./TERMI-NAL BOX	ANT./ FRONT
	MT	1160-160	KEYED	380V	Dx	3-6/9000	5,5 - 9,5		2	MORS./TERMI-NAL BOX	ANT./ FRONT
	MT	1160-120	SPEC	380V	Dx	3-6/9000	4 - 7		2	MORS./TERMI-NAL BOX	ANT./ FRONT
	MT	1160-160	SPEC	380V	Dx	3-6/9000	5,5 - 9,5		2	MORS./TERMI-NAL BOX	ANT./ FRONT
	MT	1160-160	SPEC	380V	Dx	3-6/9000	5,5 - 9,5		2	MORS./TERMI-NAL BOX	ANT./ FRONT
	MT	1160-160	KEYED	380V	Dx	3-6/9000	5,5 - 9,5		2	MORS./TERMI-NAL BOX	ANT./ FRONT
	MT	1160-220	KEYED	380V	Dx	3-6/9000	9,2 - 15		2	MORS./TERMI-NAL BOX	ANT./ FRONT
	MT	1160-160	KEYED	380V	Dx	3-6/9000	5,5 - 9,5		2	MORS./TERMI-NAL BOX	ANT./ FRONT
	MT	1160-120	KEYED	380V	Dx	3-6/9000	4 - 7		2	MORS./TERMI-NAL BOX	ANT./ FRONT
	MT	1160-200	KEYED	380V	Dx	3-6/9000	7,4 - 12,7		2	MORS./TERMI-NAL BOX	ANT./ FRONT
	MT	1160-200	SPEC	380V	Dx	3-6/9000	7,4 - 12,7		2	MORS./TERMI-NAL BOX	ANT./ FRONT
	MT	1160-200	KEYED	380V	Dx	3-6/9000	7,4 - 12,7		2	MORS./TERMI-NAL BOX	ANT./ FRONT
	MT	1160-200	SPEC	380V	Dx	3-6/9000	7,4 - 12,7		2	MORS./TERMI-NAL BOX	ANT./ FRONT

HSD NEL MONDO
HSD WORLDWIDE

HSD SpA - Factory Headquarters
Piazzale Alfio de Simoni, s/n
61122 Pesaro, Italy
Tel +39 0721 205211
Fax +39 0721 205247

HSD SpA - Registered office
Via della Meccanica, 16
61122 Pesaro, Italia
supporthsd@hsd.it
www.hsd.it

HSD USA Inc.
3764 SW, 30° Avenue
33312 Fort Lauderdale FL, USA
Tel +1 954 587 1991
Fax +1 954 5878338
supporthsdusa@hsd.it
www.hsdusa.com

HSD Shanghai Co. Ltd
207 Taigu Road Waigaoqiao Free Trade Zone
200131 Shanghai, China
Tel: +86 215866 1236
Fax +86 215866 1237
sales@hsd-china.cn
www.hsd-china.cn

HSD Deutschland GmbH
Brückenstrasse, 32
D-73037 Göppingen, Deutschland
Tel +49 7161 956660
Fax +49 7161 9566610
supporthsddeut@hsddeutschland.de
www.hsddeutschland.de



HSD
MECHATRONIC
DIVISION

More Value for Your Machine